



TOWAMENCIN TOWNSHIP

SIDEWALK CONNECTIVITY STUDY

Public Meeting #4 – June 22, 2023

Agenda

1. Team Introduction
2. Public Input Review
 - Survey Results
 - Wikimap Results
3. Toolbox Review
4. Final Plan Review
 - A Closer Look
5. Cost Estimate
6. Prioritized Routes
7. Funding
 - Funding Resources
 - TASA grant application example
8. Discussion
9. Next Steps

Project Committee

Committee Members

Brett Mackay, Chairman

bmackay@chesterv.com

Patricia Younce, Vice Chair

pkyounce@comcast.net

Douglas Leach

dleach3846@gmail.com

Joseph Vavra

jmvavra7@gmail.com

Matt Chartrand

mchartrand@bohlereng.com

Dr. Edward Buonocore

ebbear3@yahoo.com

Nancy Becker

njbeckerrod12@gmail.com

Dennis McGeehan

dennis.mcgeehan@cushwake.com

Richard Marino

rmarino@towamencin.org

Project Consultants

Peter Simone

psimone@simonecollins.com

Emma Haley

ehaley@simonecollins.com

Bryce Brucker

bbrucker@simonecollins.com

Geoff Creary

gcreary@simonecollins.com



119 E. Lafayette Street
Norristown, PA 19401
Phone - 610 239 7601
Fax - 610 239 7606
www.simonecollins.com

Project Schedule

- 4 Public meetings
- 4 Committee meetings
- Selected Key Person Interviews
- Opinion Survey (6 mo.)
- Wikimapping
- Press Releases
- Township Staff meetings

Towamencin Connectivity Study – Project Schedule

Meeting	Purpose	Date	Time
Committee Meeting #1	Project overview, initial site analysis, brainstorming	Monday, October 10, 2022	7:00 - 8:30 PM
Public Opinion Survey/ Wikimapping Period	Write and administer Public Opinion Survey/ Wikimapping	Monday, October 3, 2022 – Thursday, April 13, 2023	
Public Meeting #1	Project Overview / Public Brainstorming	Thursday, November 10, 2022	7:00 - 8:30 PM
Committee Meeting #2	Review Public Meeting/survey, analysis process, initial concepts	Monday, December 5, 2022	7:00 - 8:30 PM
Public Meeting #2	Analysis / Concepts	Thursday, February 9, 2023	7:00 - 8:30 PM
Committee Meeting #3	Concept refinement, draft plan overview	Monday, March 6, 2023	7:00 - 8:30 PM
Public Meeting #3	Draft Plan Presentation	Thursday, April 13, 2023	7:00 - 8:30 PM
Public Review Period	45-Day Draft Plan Review	Thursday, April 13, 2023 – Monday, May 29, 2023	
Board of Supervisors Meeting	Review Draft Plan	Wednesday, May 10, 2023	7:00 - 8:30 PM
Committee Meeting #4	Review comments and make revisions	Monday, June 5th, 2023	7:00 - 8:30 PM
Public Meeting #4	Present final plan	Thursday, June 22, 2023	7:00 - 8:30 PM





Public Input Review



Survey Results

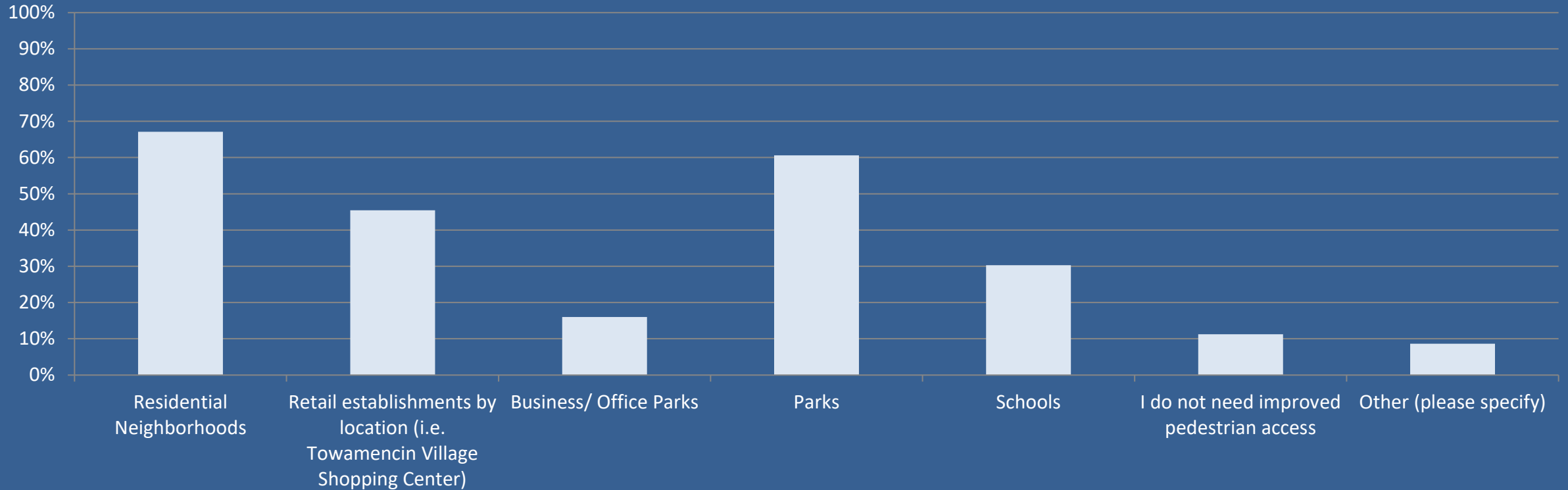
- **430 Total Responses**

SUMMARY CATEGORIES

1. **Demographics:** 65% respondents Towamencin residents >10 years
2. **Transportation & Mobility-General:** The top three areas users would like to see improved pedestrian and/or bicycle access to are: **Parks, Residential Neighborhoods, and Retail Establishments**
3. **Transportation & Mobility-Parks & Trails:** **Fischer's Park** is a major destination for both park and trail use.
4. **Traffic Safety:** The top three items that would encourage users to walk more are **additional sidewalks, additional off-road trails, and better connectivity between sidewalks**
5. **General Issues and Concerns:** Users want to **prioritize improving/widening sidewalks and pedestrian paths**; then, maintaining existing infrastructure (sidewalks, roadways, etc.)

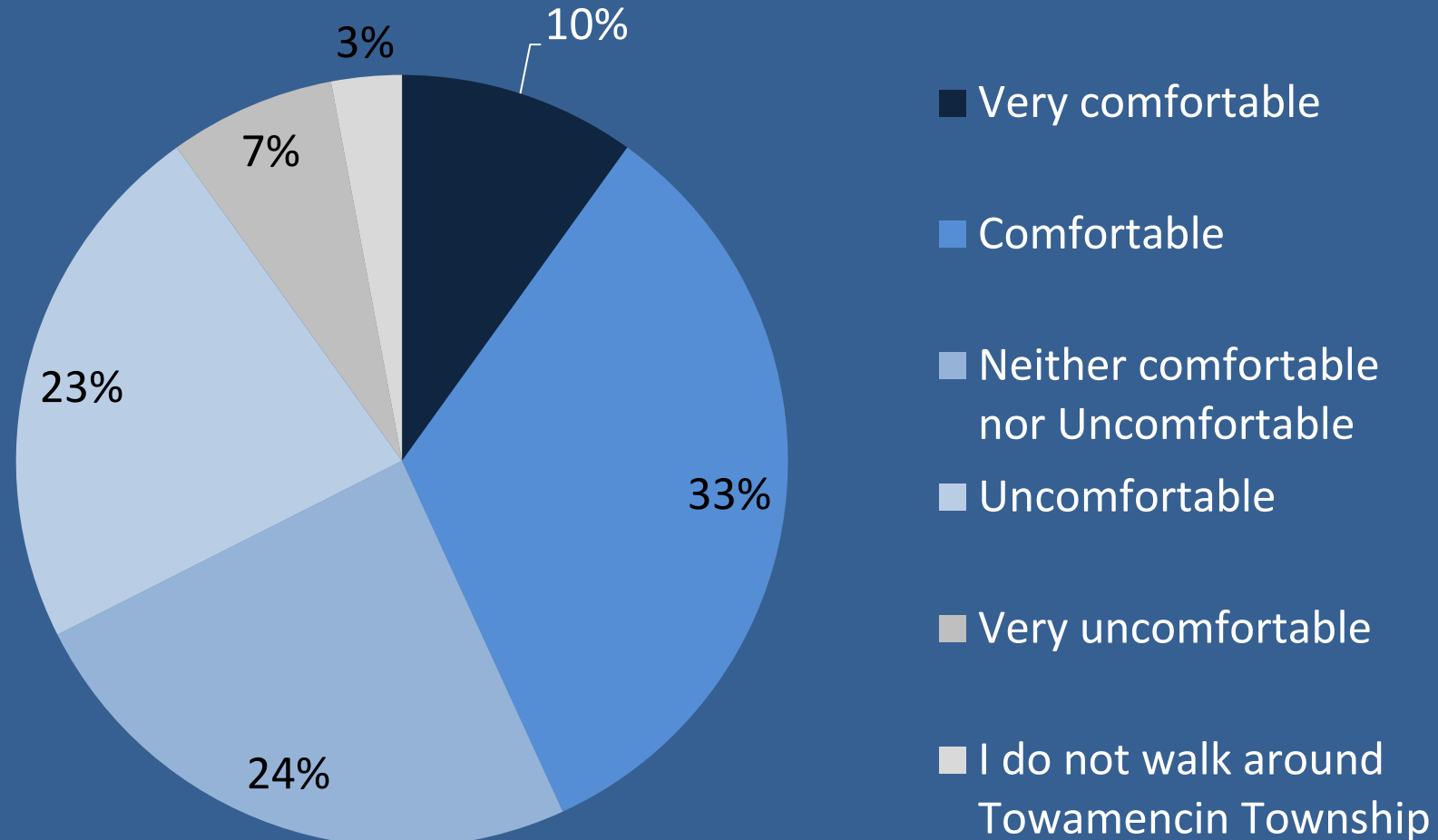
Survey Results

To what areas would you like improved pedestrian and/or bicycle access?
Select all that apply.



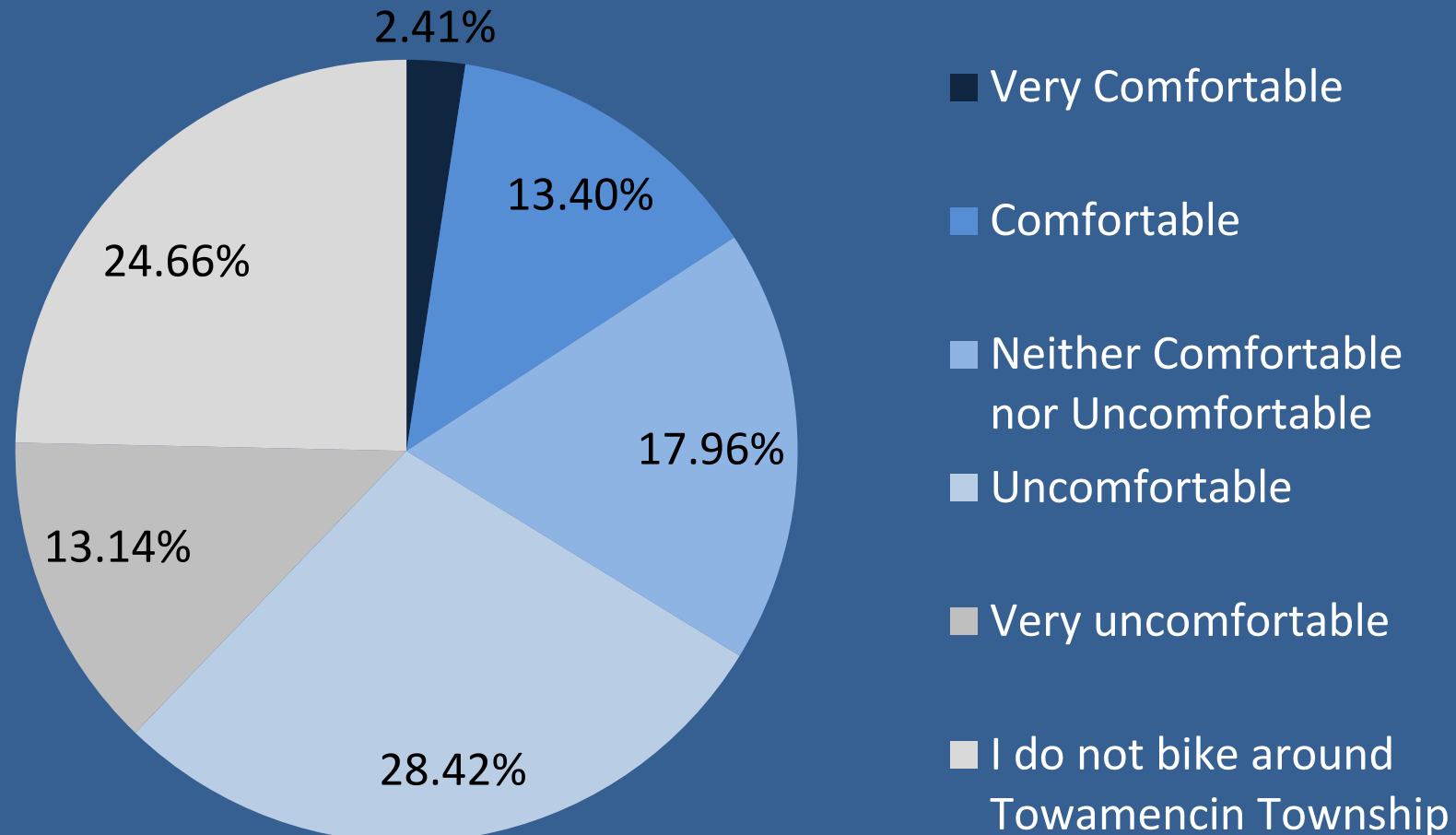
Survey Results

From a perspective of traffic safety, how comfortable do you feel walking in Towamencin Township?



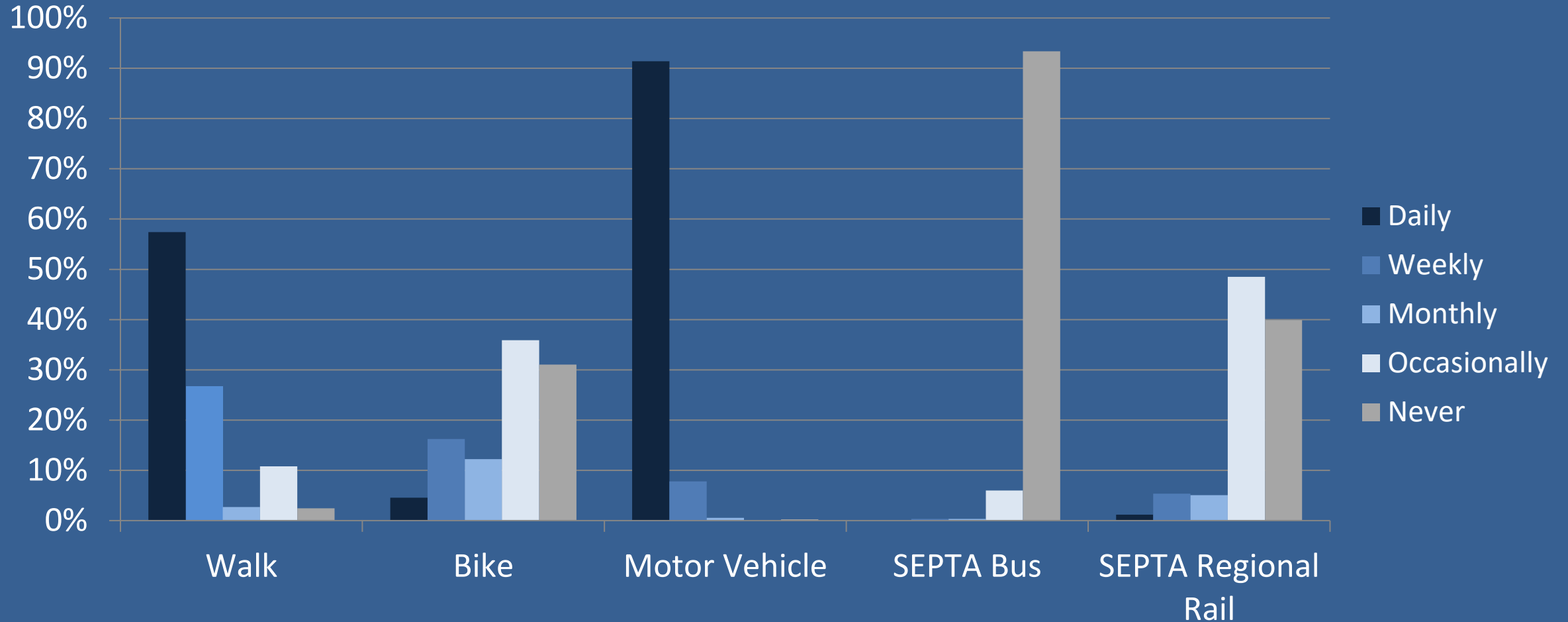
Survey Results

From a perspective of traffic safety, how comfortable do you feel biking in Towamencin Township?




Survey Results

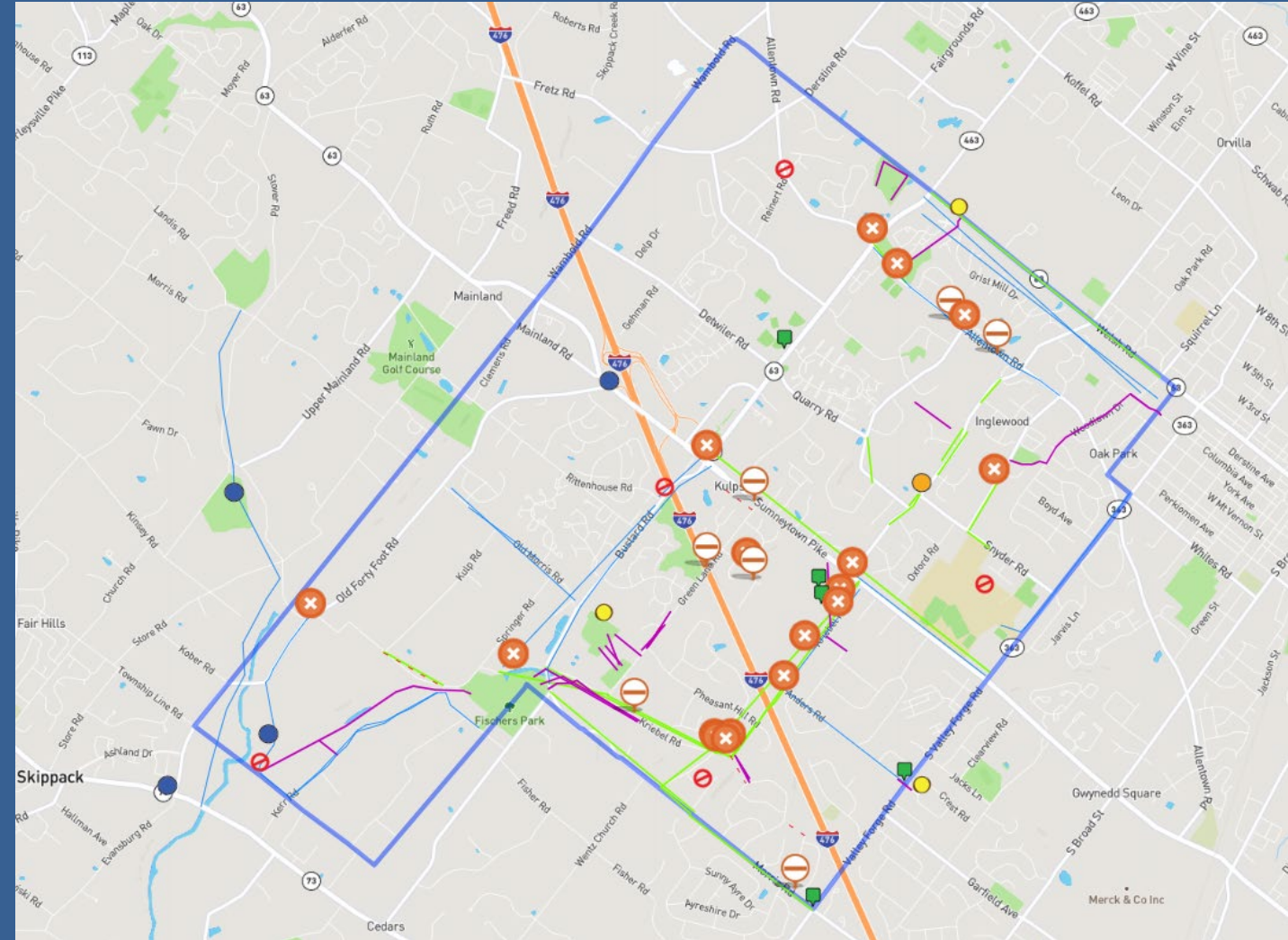
How often do you use the following modes of transportation?



WikiMap Results

- **129 Total Responses**

-  **BARRIERS TO CONNECTIVITY (5 total)**
-  **DESIRED BIKE ROUTE (17 Total)**
-  **DESIRED SIDEWALK (21 Total)**
-  **DESIRED TRAIL (24 Total)**
-  **CHALLENGING AREAS (17 Total)**
-  **CUTURAL/HISTORIC LOCATION (4 Total)**
-  **DESIRED DESTINATION (3 Total)**
-  **DESIRED LOCATION FOR CROSSWALK (2 Total)**
-  **SIDEWALK GAP LOCATION (8 Total)**





Improvement Toolbox Review



Improvement Toolbox

Improvement items shown with symbols on map, which represent our recommendations for the Township.



Sidewalk



Crosswalk



Decorative Crosswalk



Speed Cushion



Rapid Flashing Beacon



Hand Man



Pedestrian Refuge Island



Multi-Use Trail



Side Path



Sharrow



Bicycle Lane



Road/Lane Closure



Trail Bridge



Pocket Park



Connection To Adjacent Townships



Roundabout

Improvement Toolbox – How it works



Improvement Toolbox – How it works



Side Path

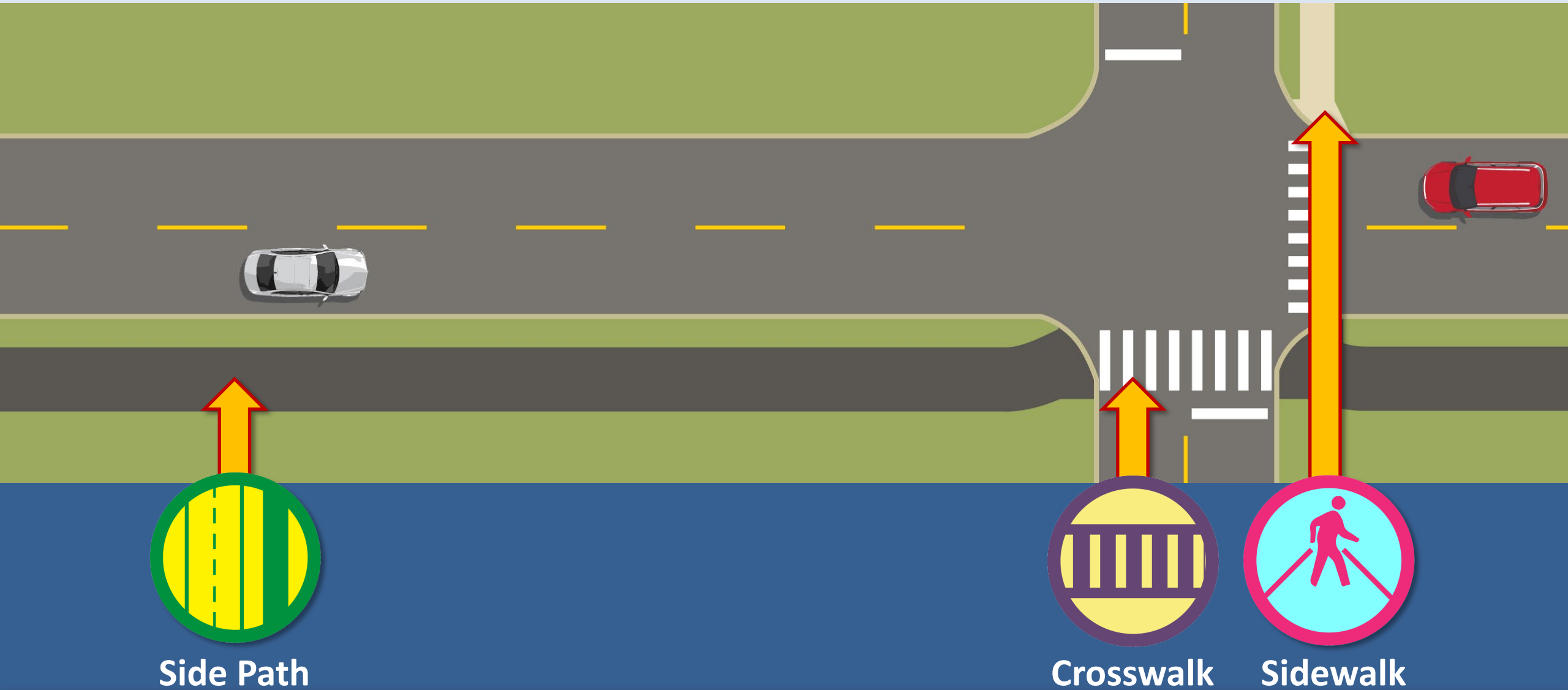
Improvement Toolbox – How it works



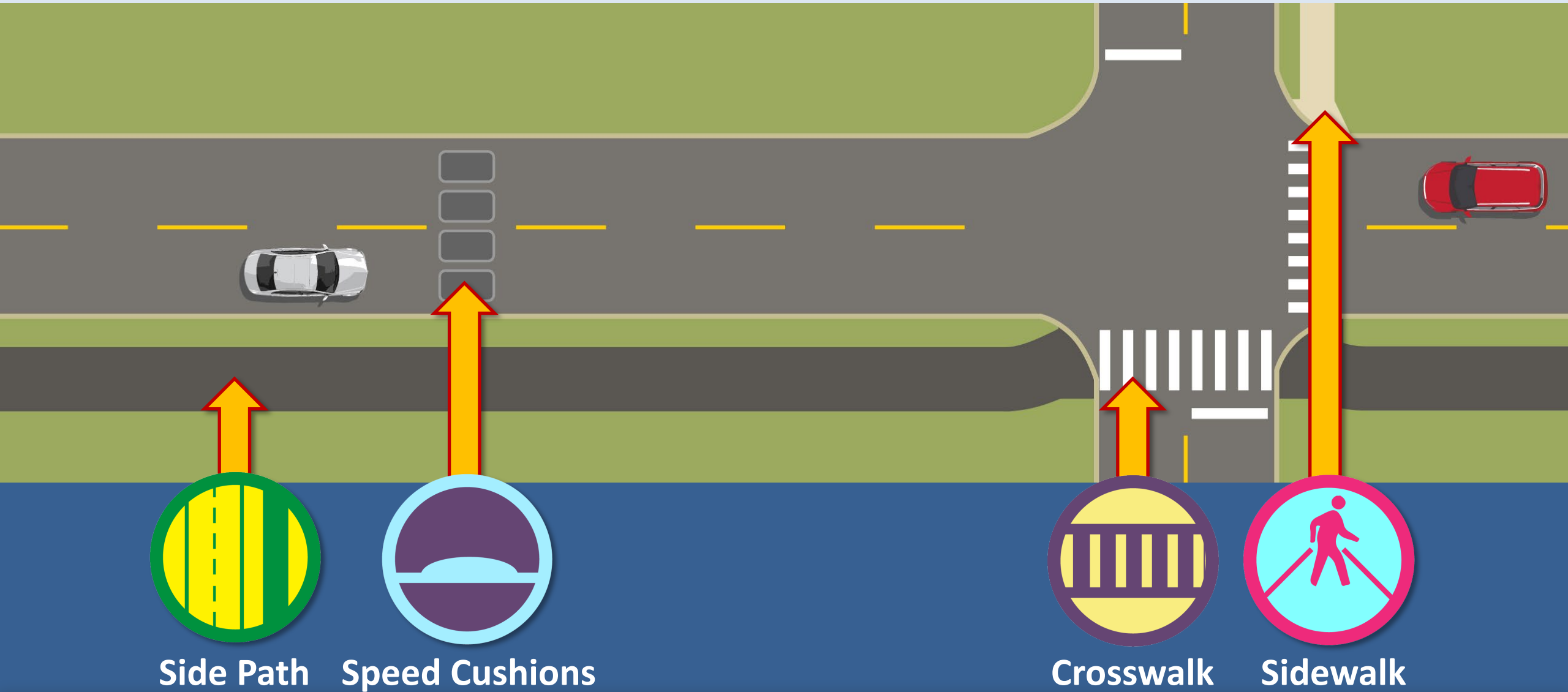
Side Path

Sidewalk

Improvement Toolbox – How it works



Improvement Toolbox – How it works



Side Path

Speed Cushions

Crosswalk

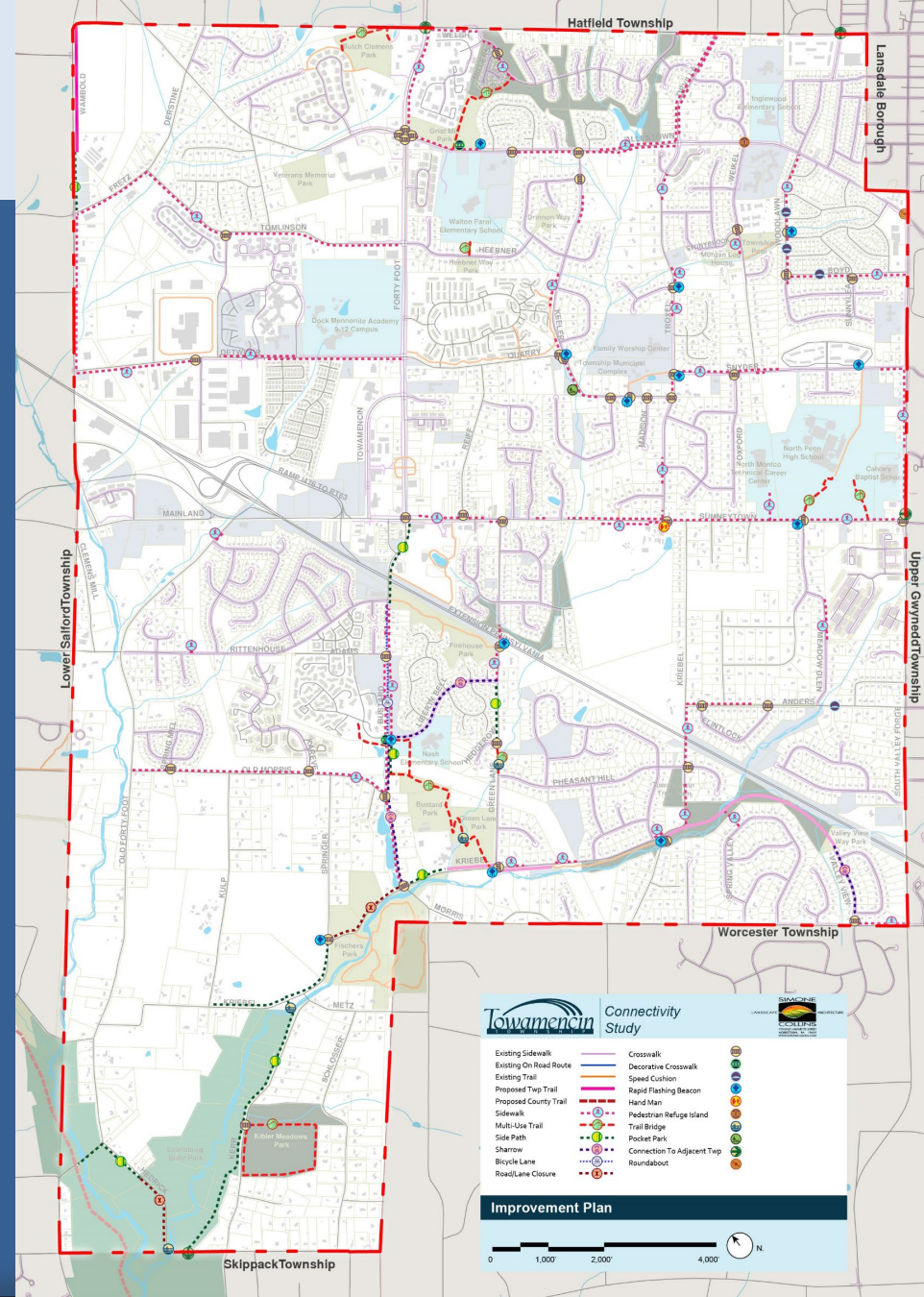
Sidewalk



Final Plan Review



Final Improvements Plan



Route Concepts

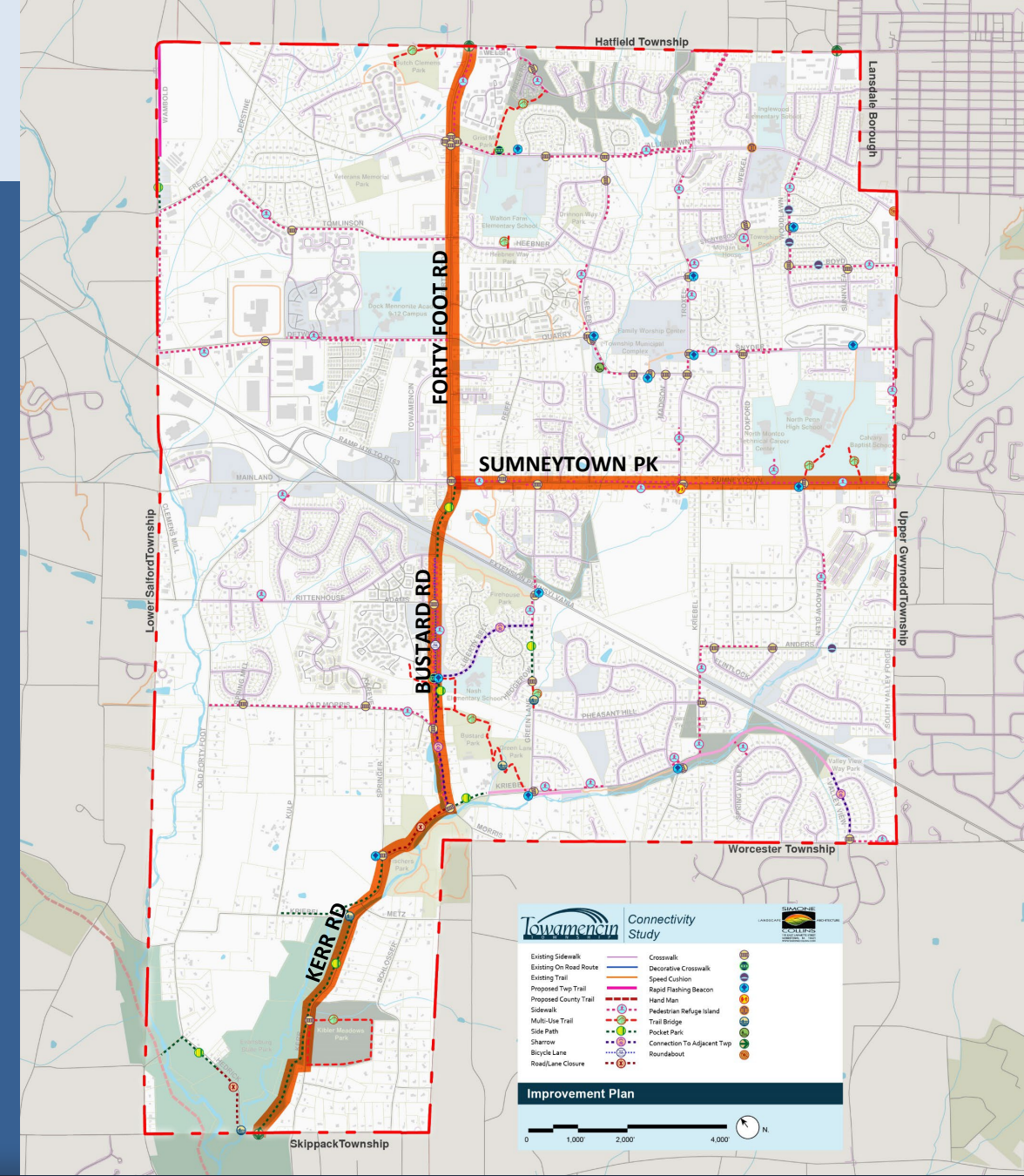
1. Township Collector Route
2. School Connection Route
3. Park Connection Route



Route Concepts

Township Collector Routes

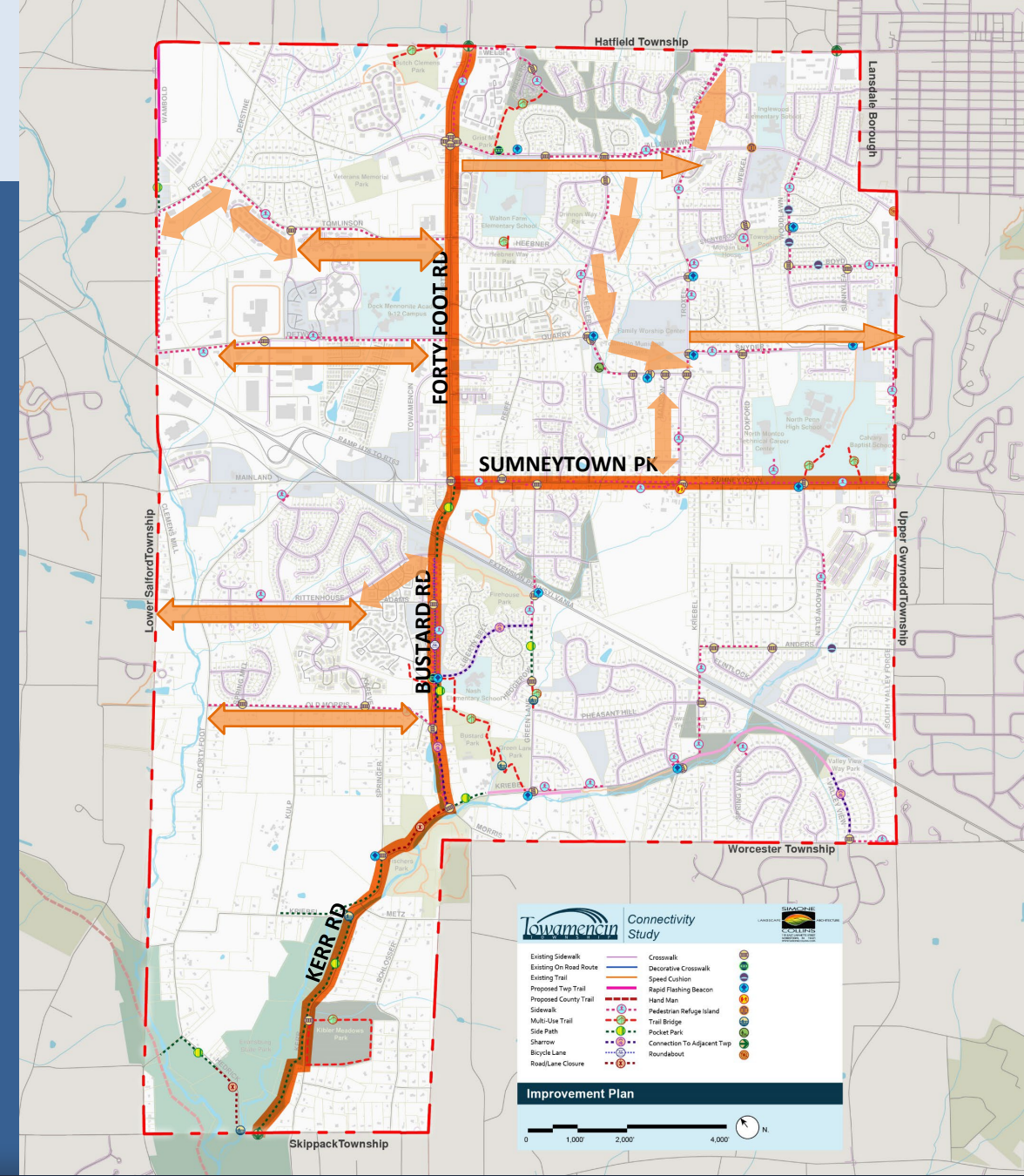
- Runs North-South on Forty Foot Road and Bustard
 - Connects northern commercial area of Township to Evansburg State Park in the south
- Runs East-West on Sumneytown Pike
 - Creates lateral connection to residential areas



Route Concepts

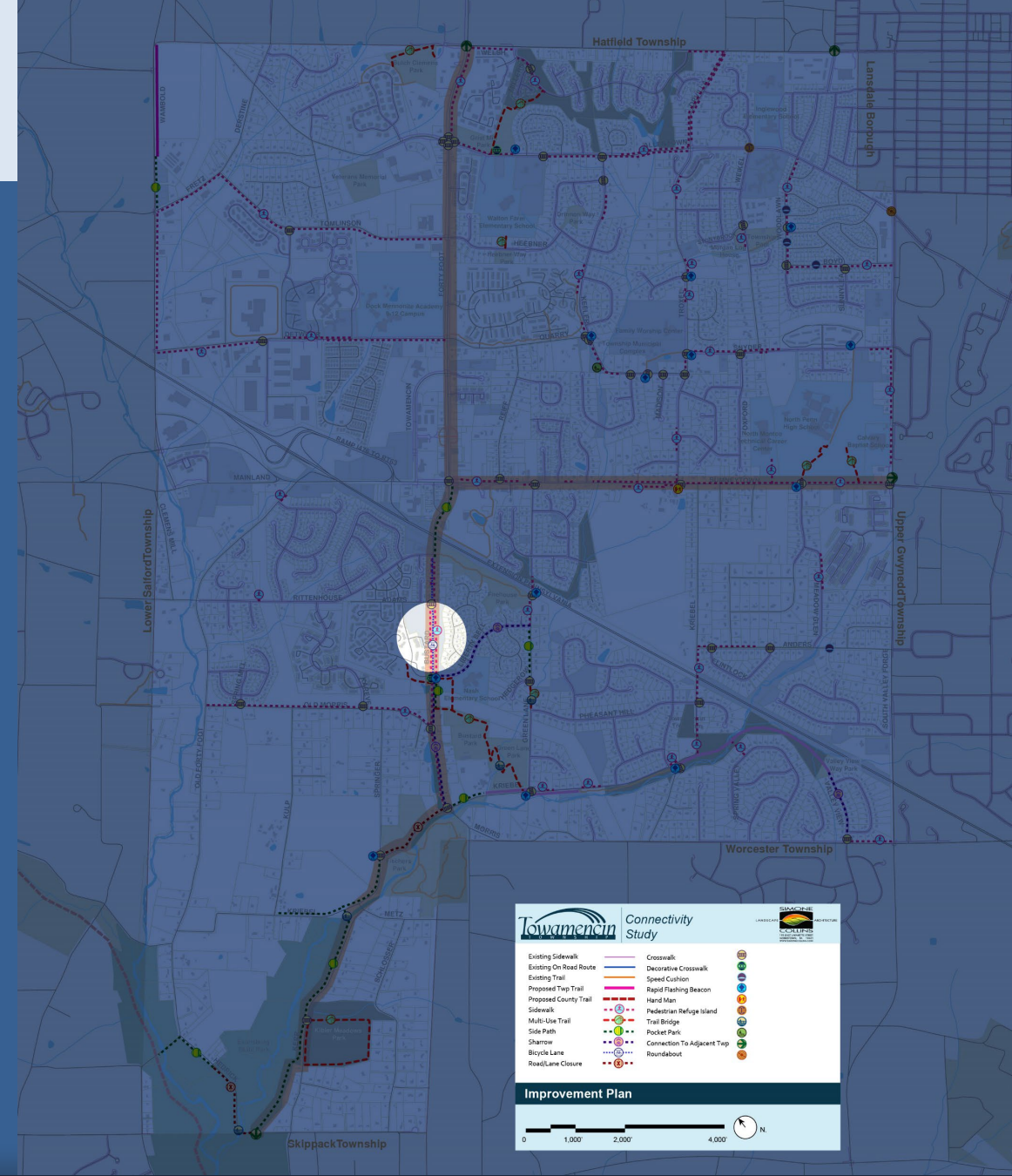
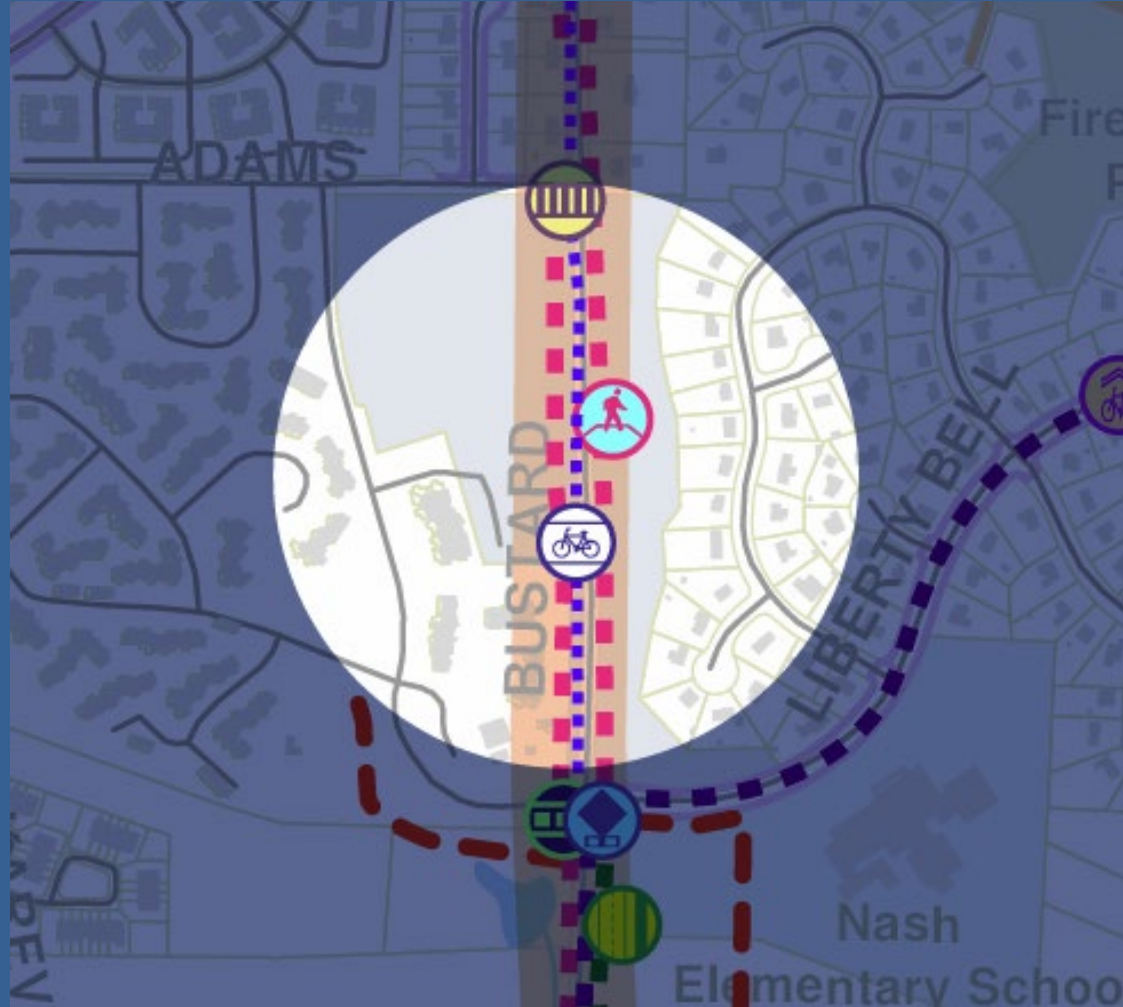
Township Collector Route

- Connecting residential areas to major trail connectors



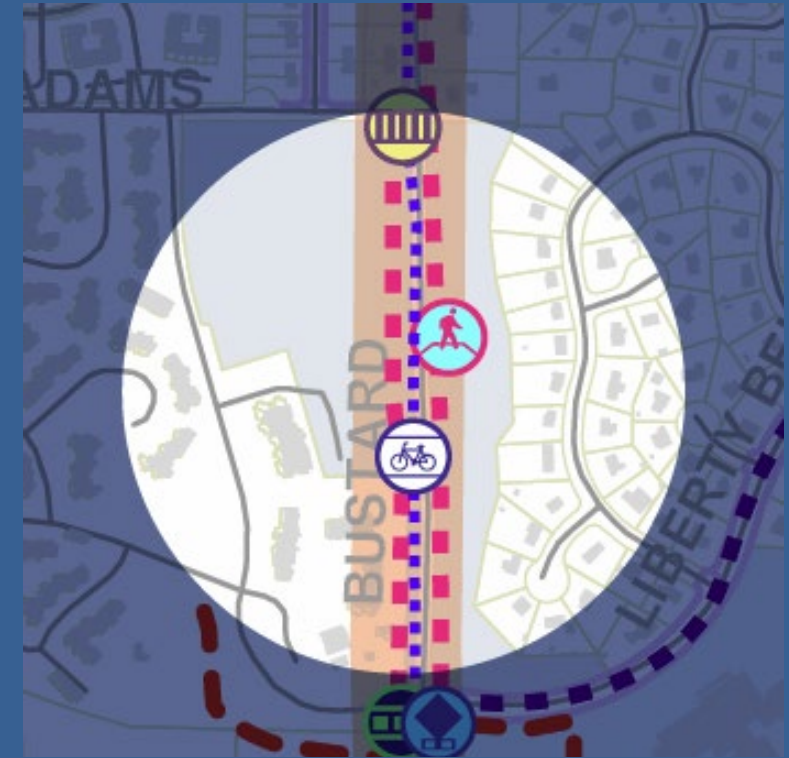
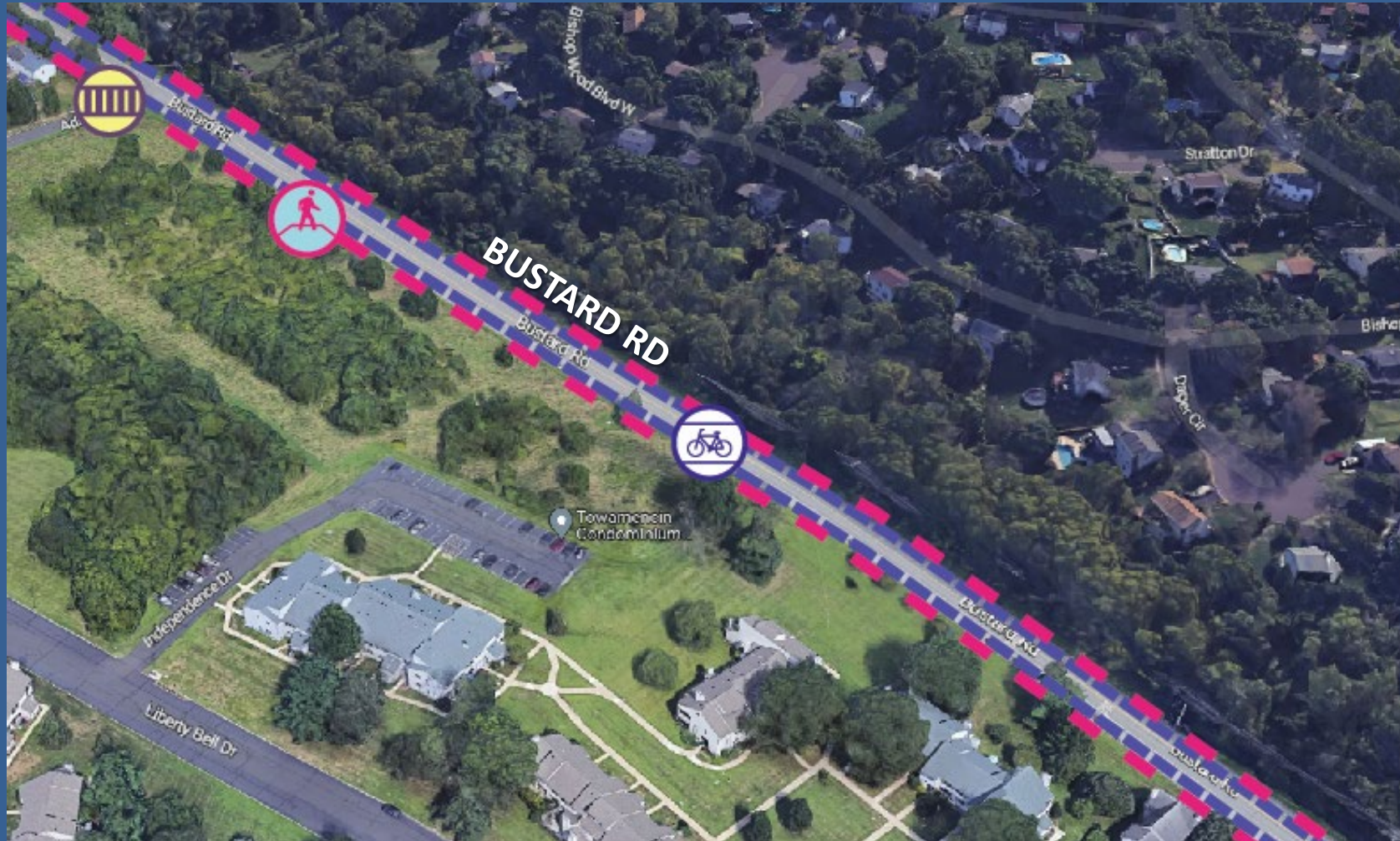
A Closer Look...

Bustard Road, South of Rittenhouse Road



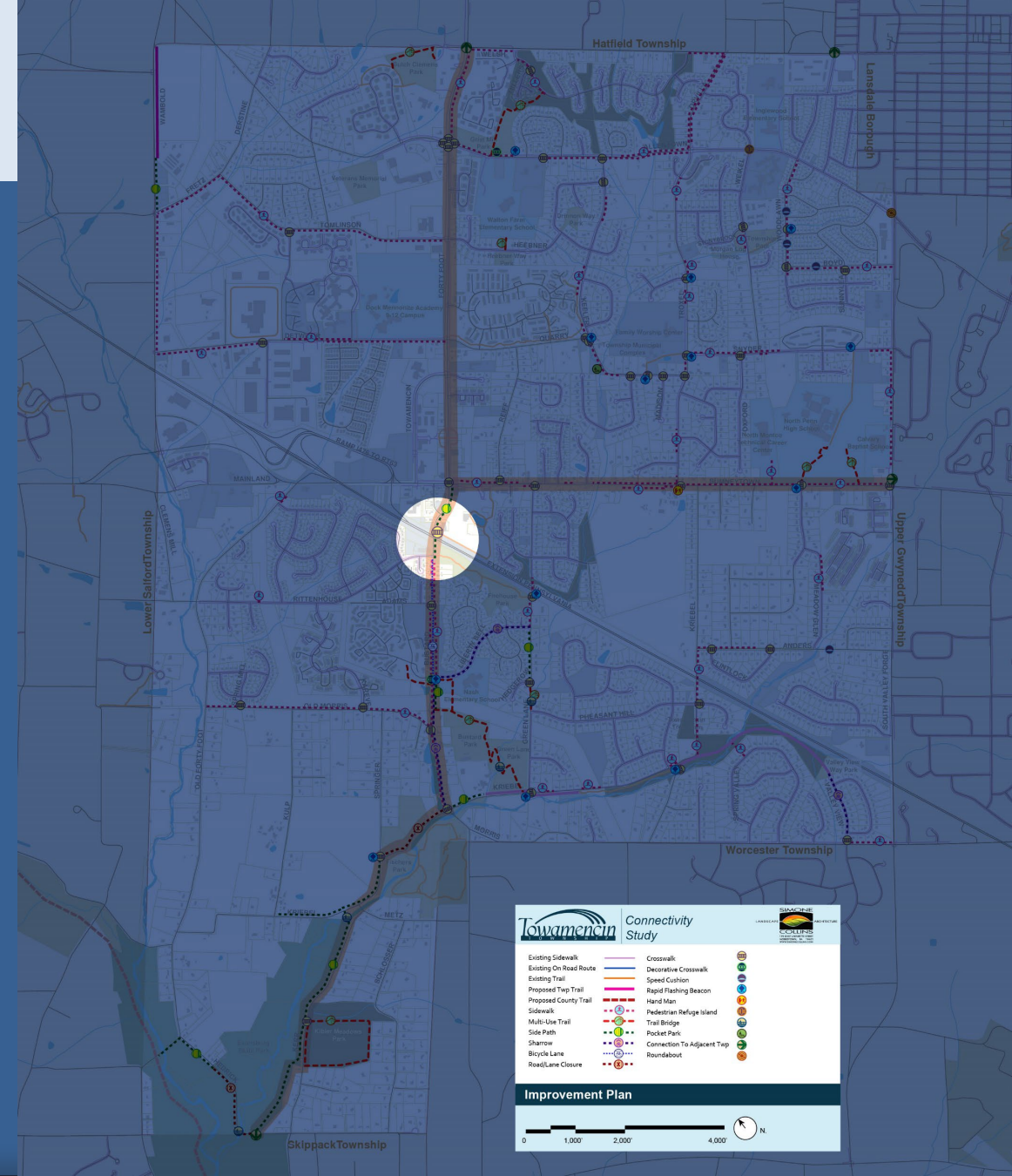
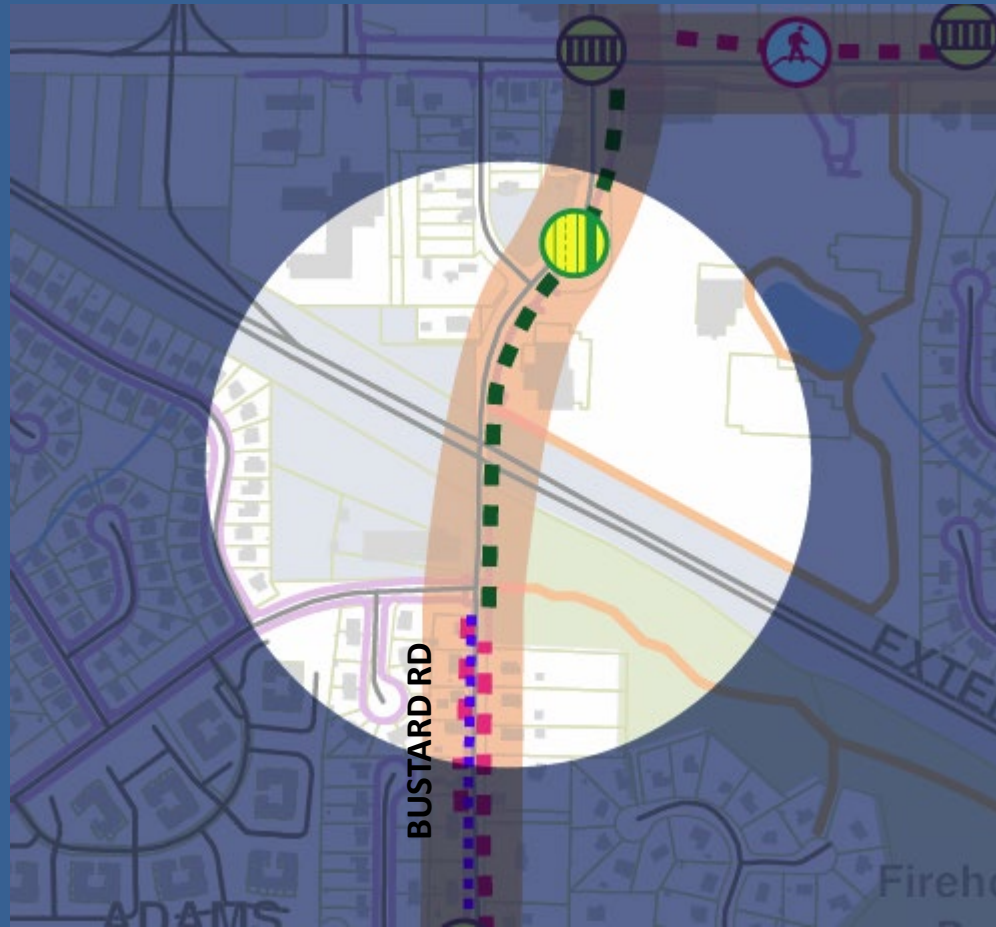
A Closer Look...

Bustard Road, South of Rittenhouse Road



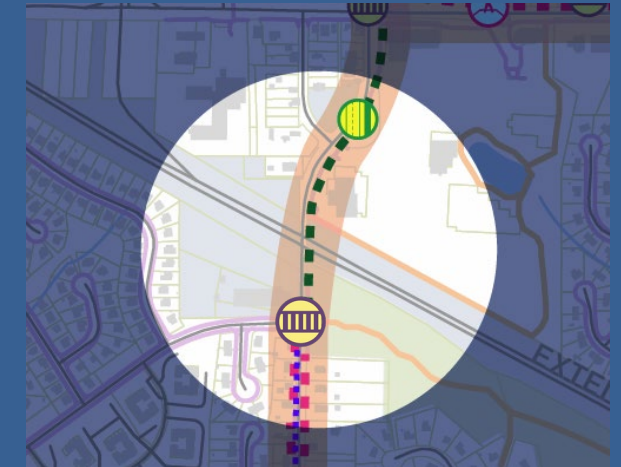
A Closer Look...

Bustard Road, North of Rittenhouse Road



A Closer Look...

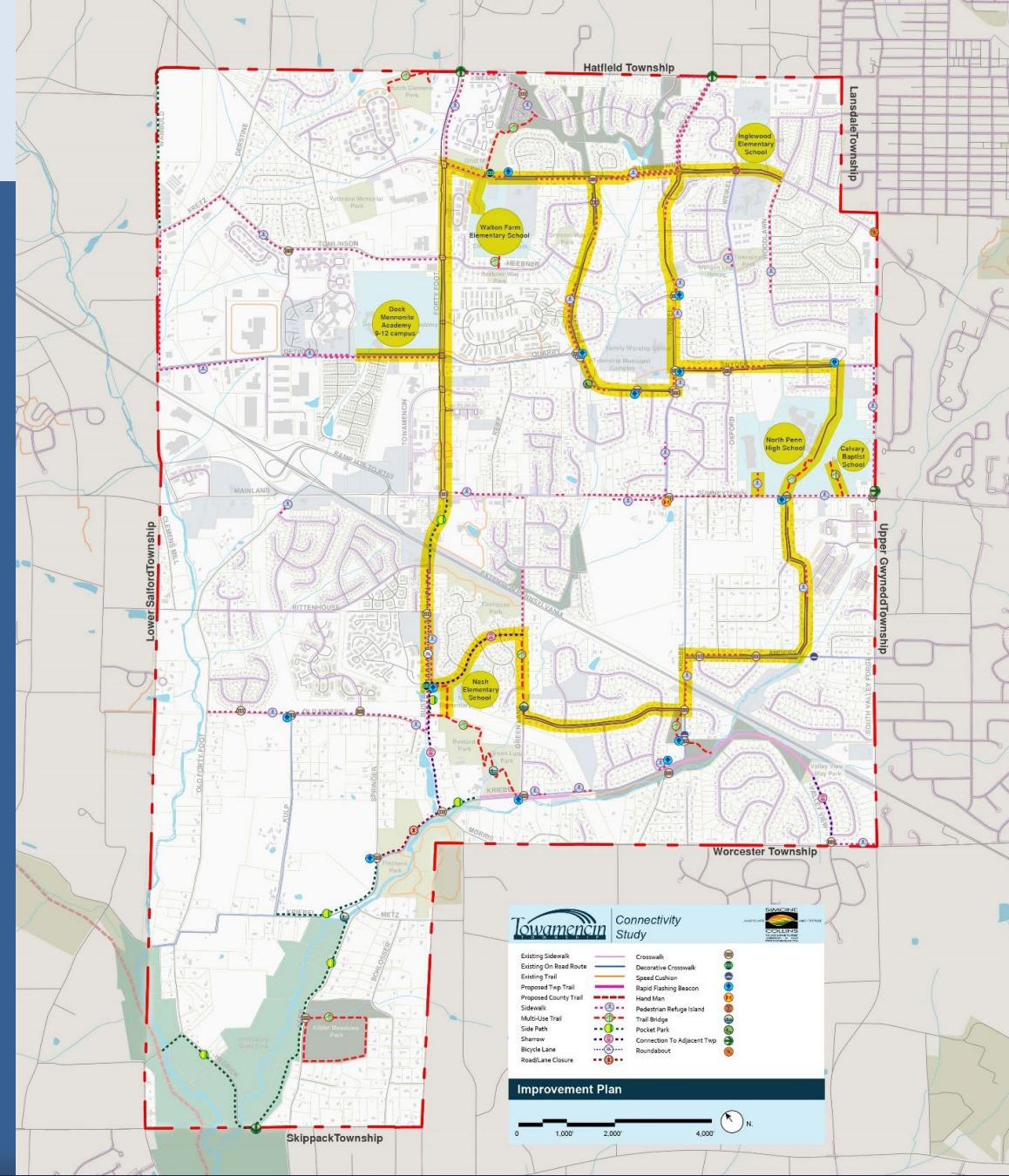
Bustard Road, North of Rittenhouse Road



Route Concepts

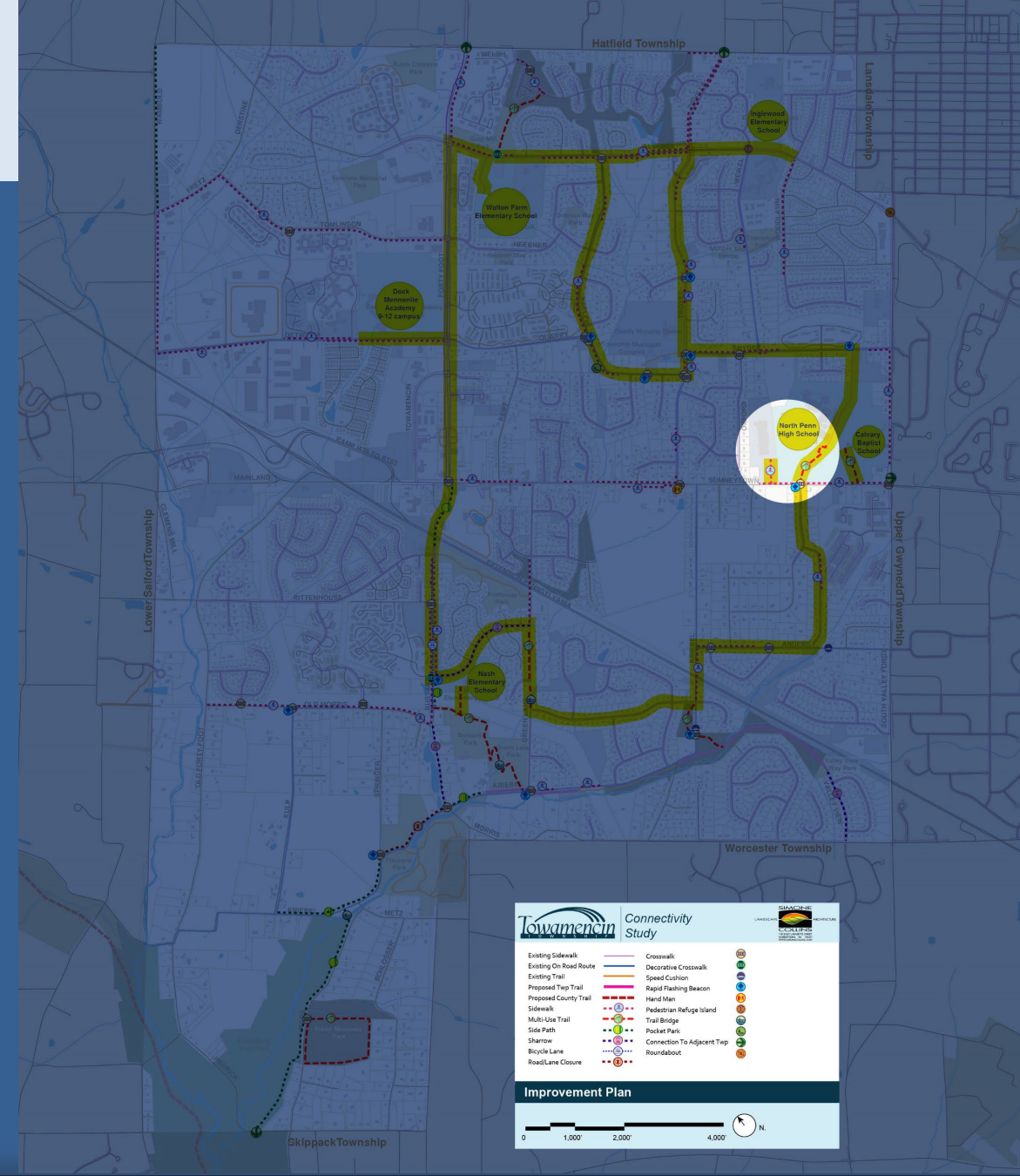
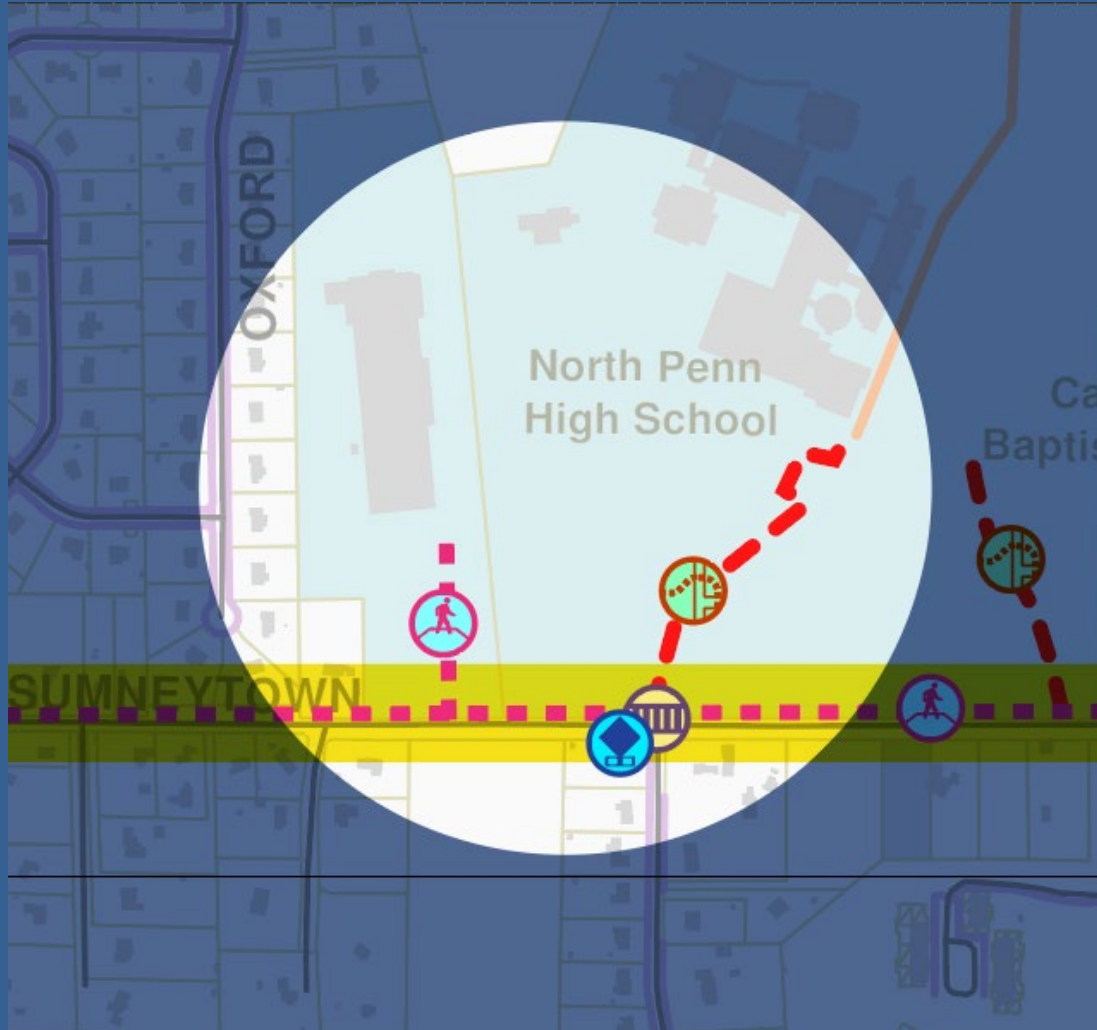
School Connection Route

- The route will connect all public and private grade schools, and the vocational school:
 - Inglewood Elementary School
 - Nash Elementary School
 - North Penn High School
 - Walton Farm Elementary
 - Dock Mennonite Academy
 - Calvary Baptist School
 - North Montco Technical Career Center



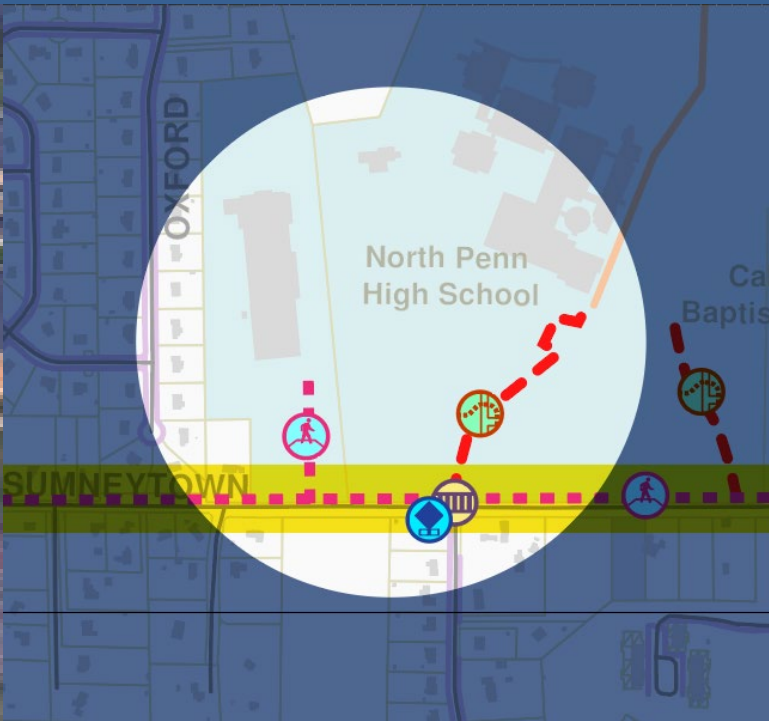
A Closer Look...

North Penn High School



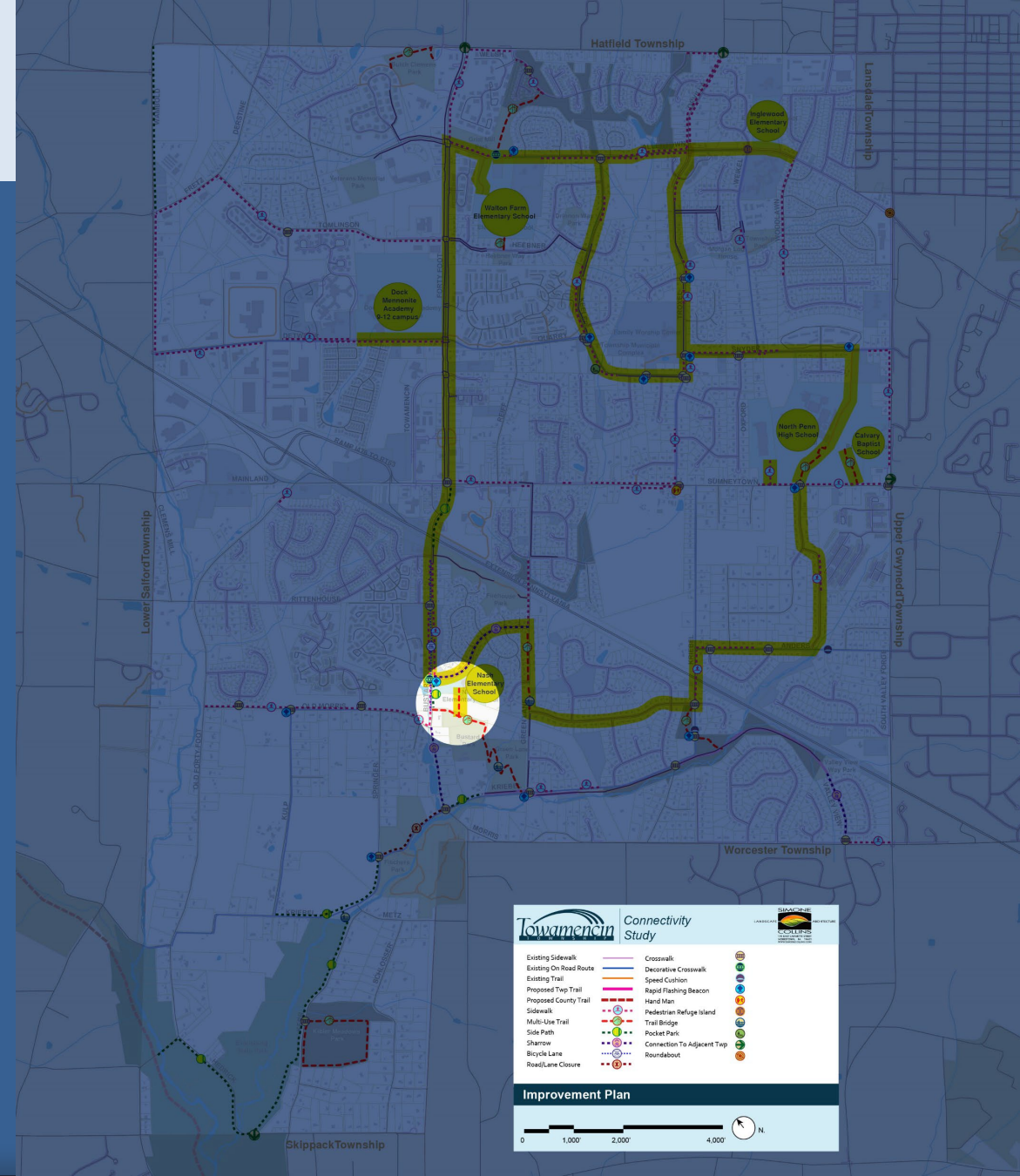
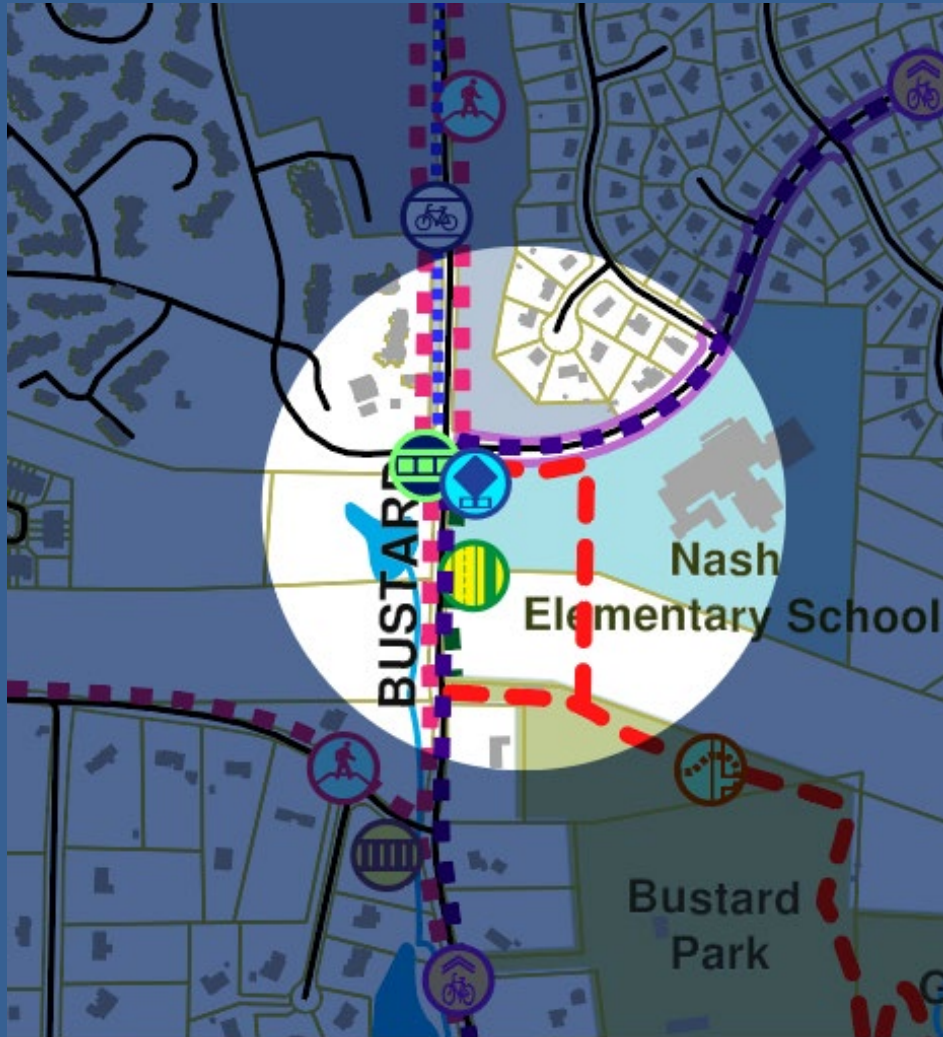
A Closer Look...

North Penn High School



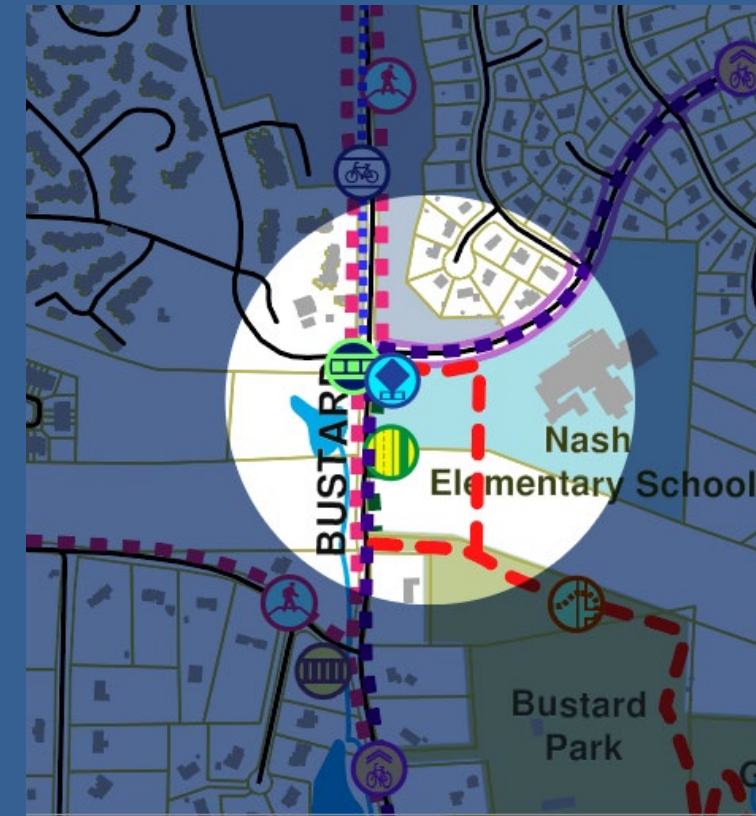
A Closer Look...

Nash Elementary School



A Closer Look...

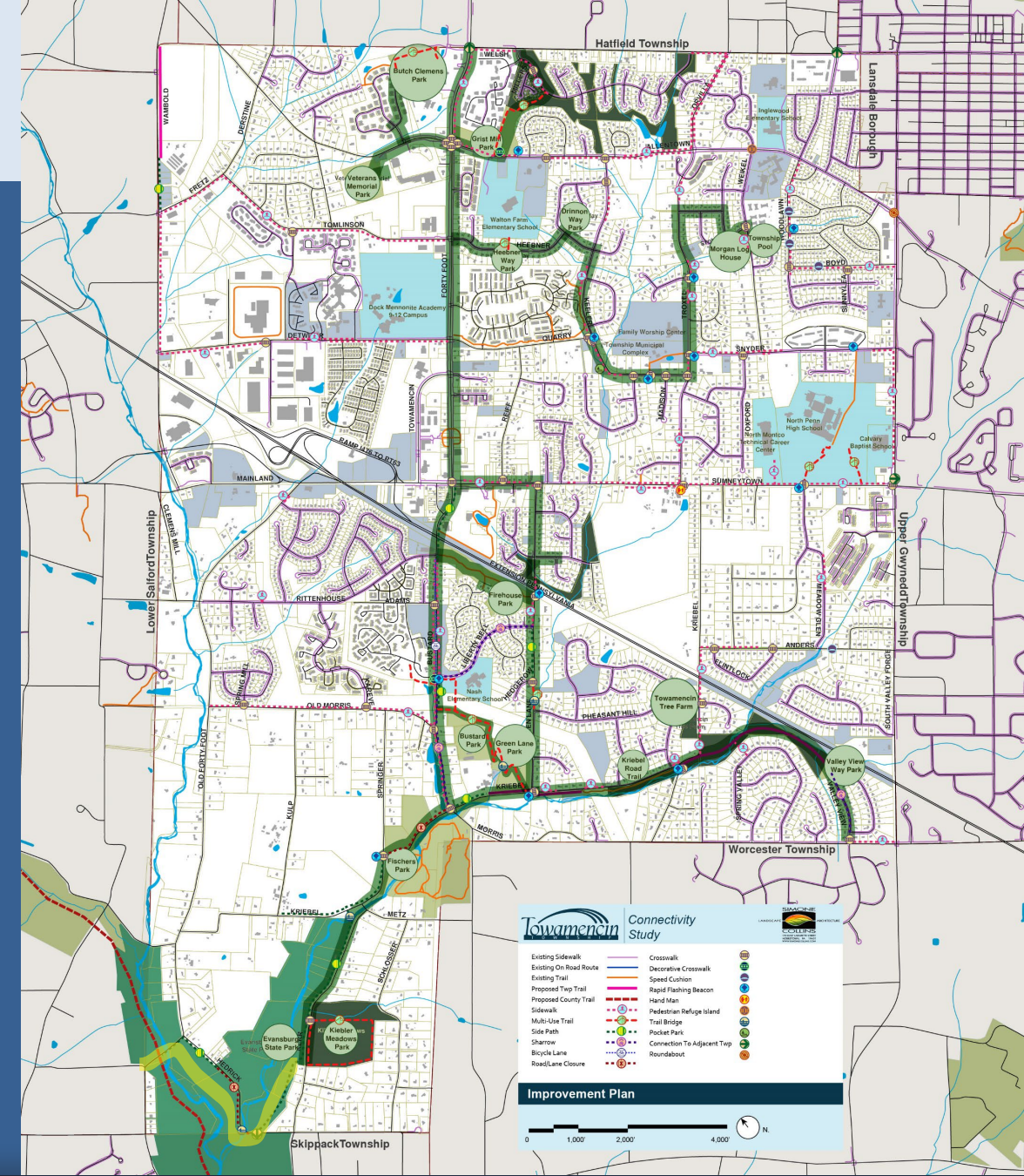
Nash Elementary School



Route Concepts

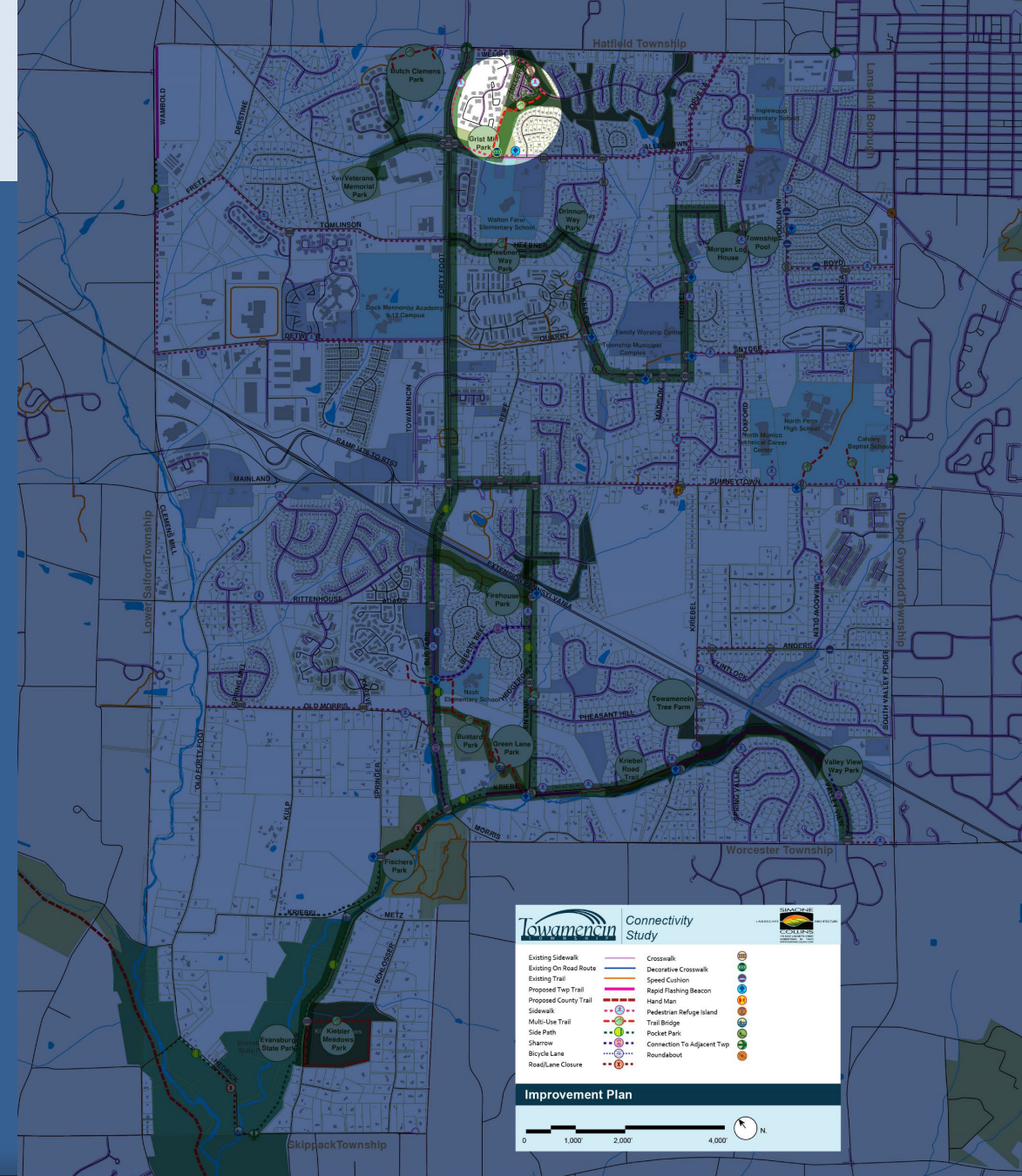
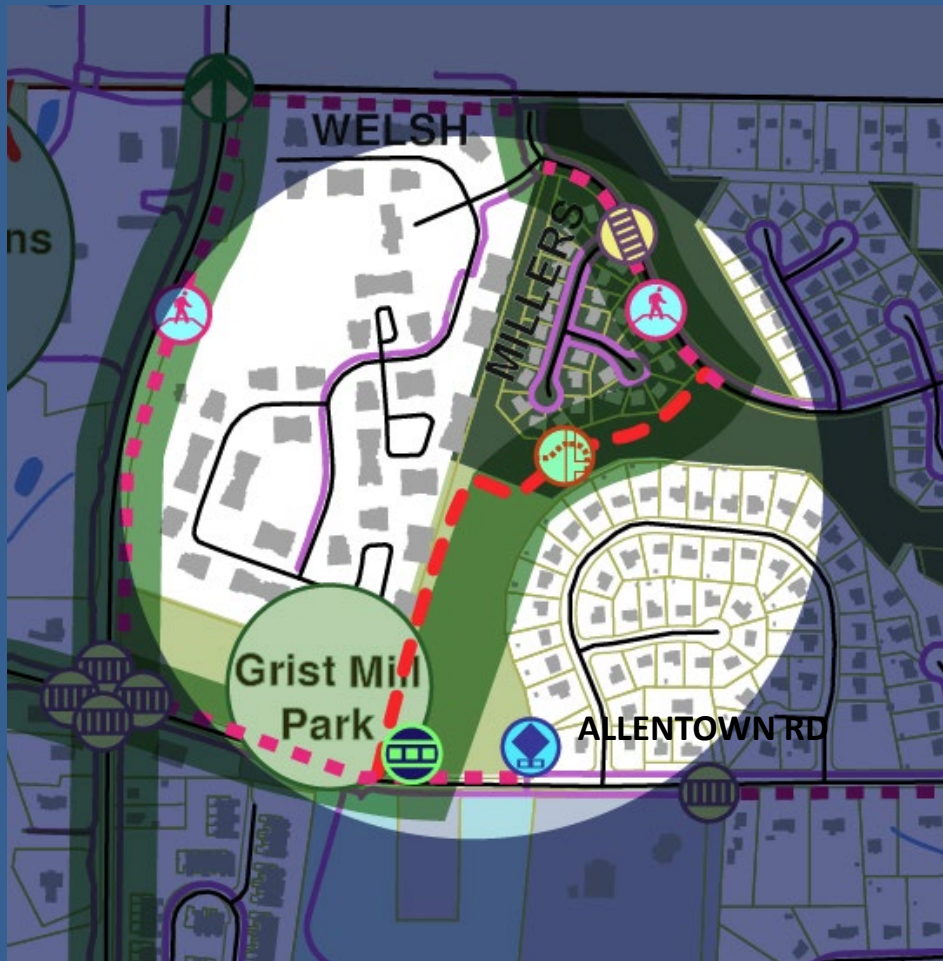
Park Connection Route

- Connects all Township parks and open space and the Evansburg State Park
- Connects to the future Kriebel Road Trail
- Utilizes existing infrastructure:
 - All improvements along ex. Roadways
 - Road Closures
- Proposes new routes:
 - Trail through Bustard Park and Green Lane Park
 - Trail through Towamencin Tree Farm
 - Side path along Evansburg State Park



A Closer Look...

Grist Mill Park



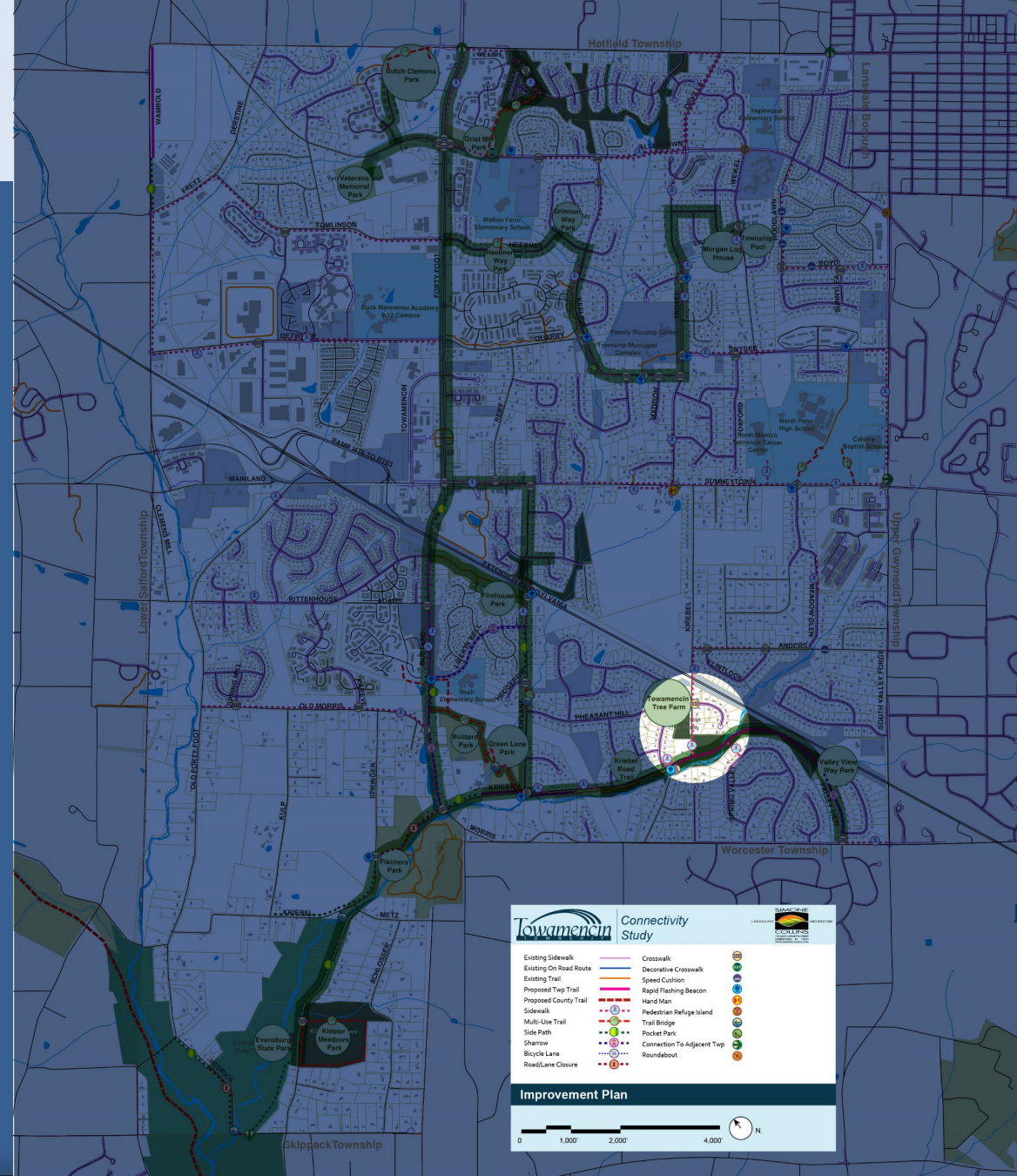
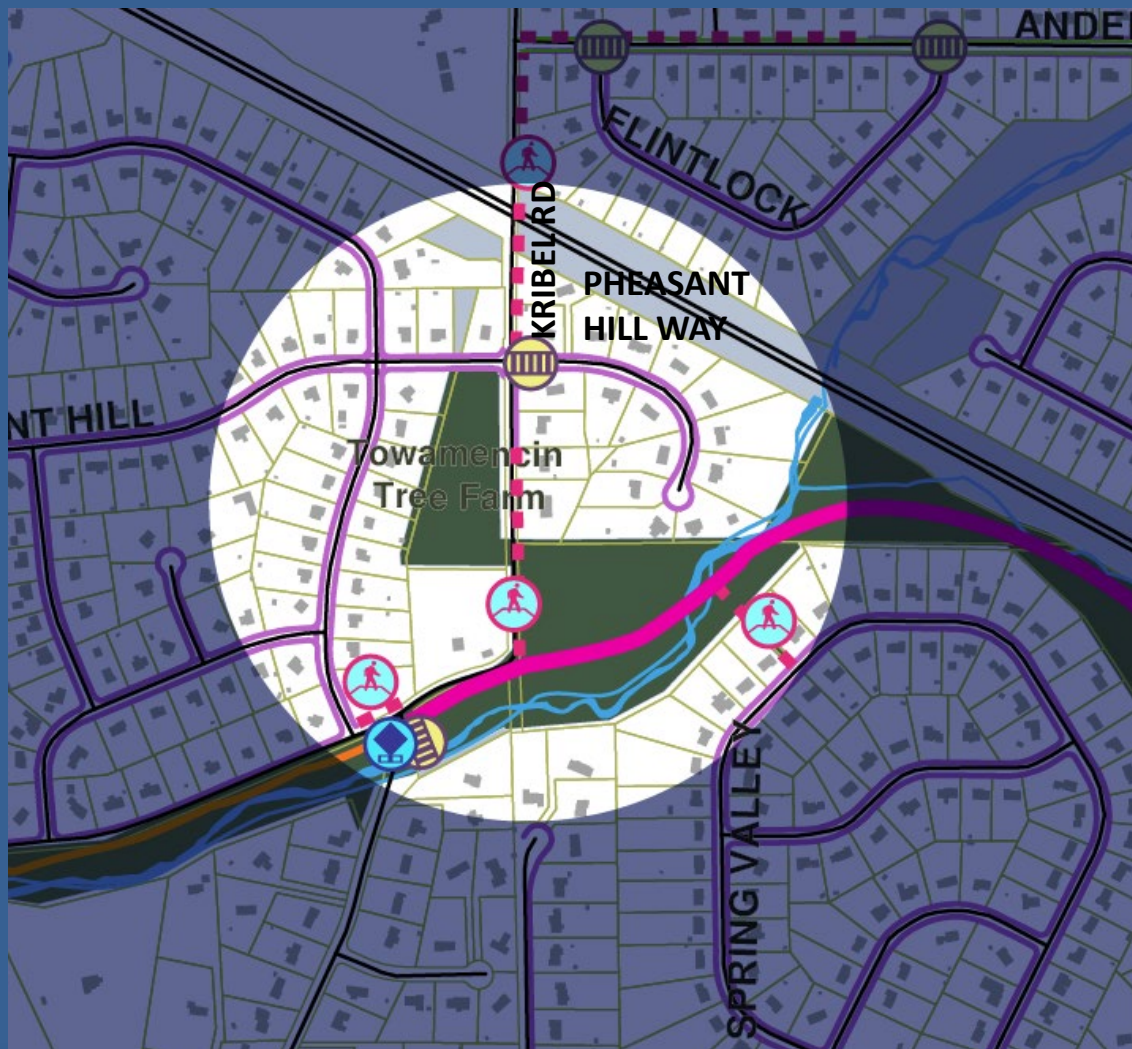
A Closer Look...

Grist Mill Park



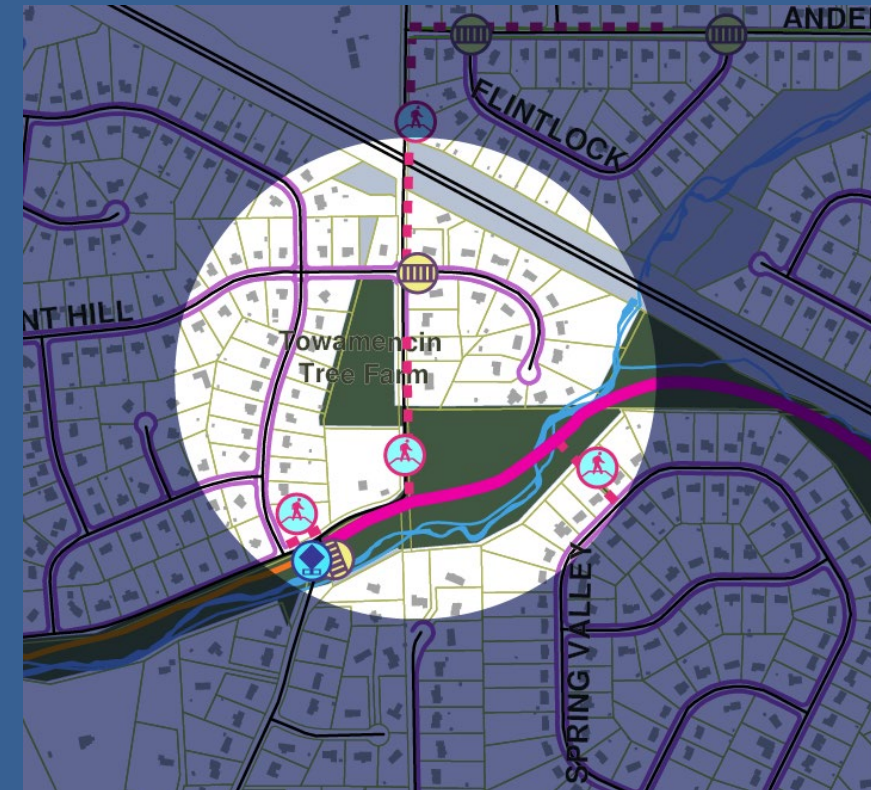
A Closer Look...

Kriebel Road Connection



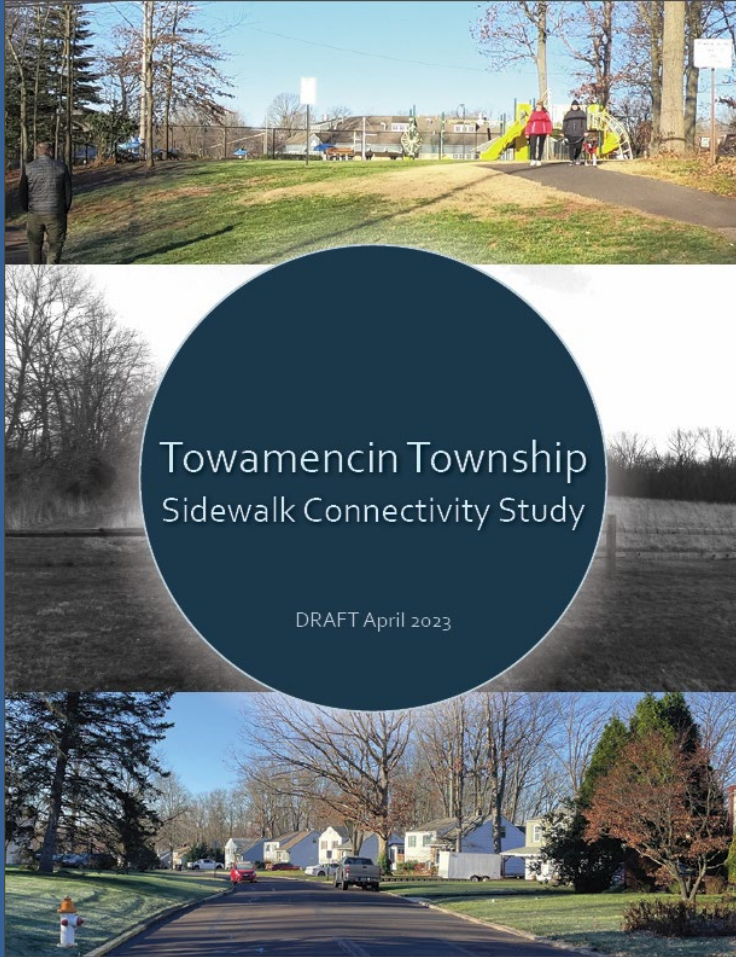
A Closer Look...

Kriebel Road Connection



A Closer Look...

Report



2.4 Outreach

As part of the process of public participation, key stakeholders were contacted, and the plan was discussed. Notes were taken during each of the stakeholder meetings listed below. Please find those notes in the appendix of the report, and a summarized version of the notes below.

School District, Thomas Schneider, Director of Facilities and Operations.

- Discussed the potential new 9th grade building on North Penn's Campus. Traffic study on Snyder and Valley Forge is being explored for a traffic signal.
- Conversed about the student population's commuting habits. Most students drive to school or get dropped off by a parent ever since COVID.
- Talked about possible connectivity improvements for the elementary schools.

Evansburg State Park, Bethany Hare, Park Manager

- Discussed a possible trailhead at Keibler Meadows Park for Evansburg State Park.
- Noted that Evansburg State Park is currently working with Worcester Township on Green Lane Road to develop more trails.
- Reviewed the possibility of adding a trail through the park along Hedrick Road.

Towamencin Township, Mary Stover Township Engineer

- Reviewed several sidewalk and trail improvement projects that are in the process of being constructed.

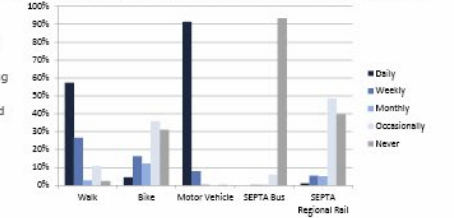
16

Towamencin Township: Sidewalk Connectivity Study

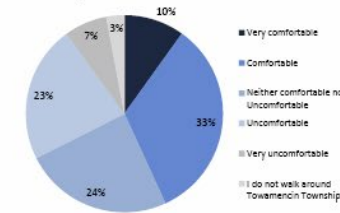
2.5 Online Survey

An online survey was conducted between October 2022 - April 2023. A total of 431 responses were received. The public provided responses to questions regarding household demographics, recreational habits, commuting patterns, and more. The survey also allowed users to share their thoughts and ideas related to walkability and bikeability through the Township. A few examples are as follows: Full response data from the survey can be found in the appendix.

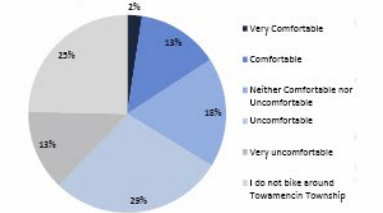
How often do you use the following modes of transportation?



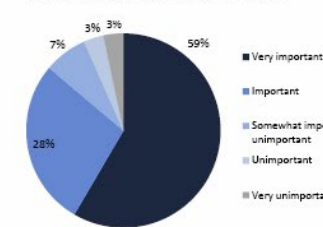
From a perspective of traffic safety, how comfortable do you feel walking in Towamencin Township?



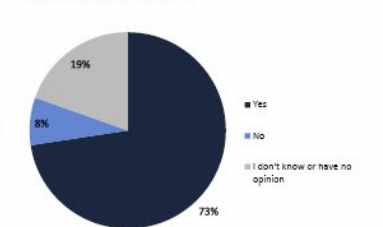
From a perspective of traffic safety, how comfortable do you feel biking in Towamencin Township?



How important are sidewalk connections and trails to the well-being of the community and quality of life in Towamencin Township?



As a motorist I would accept a slightly longer travel time if that meant a safer environment for pedestrians and bicyclists.



A Closer Look...

Report

2.12.2 Parks:

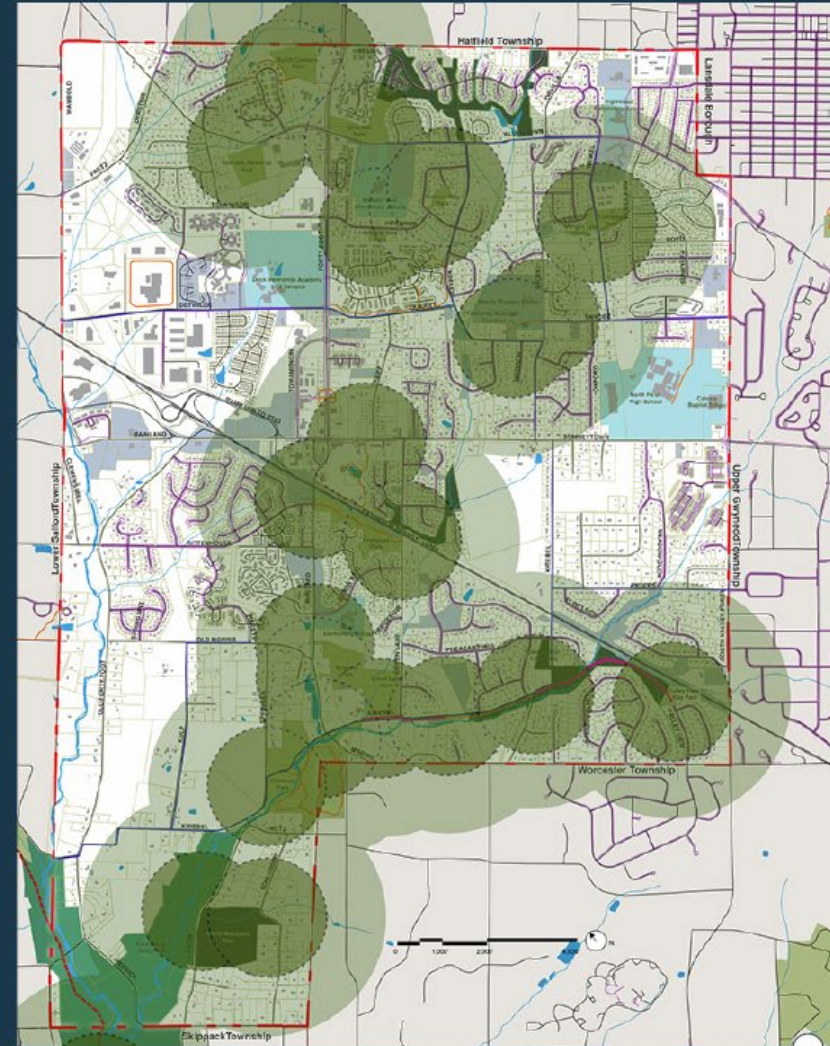
The darker green symbol in the following map represents a half-mile radius around Township parks. This distance correlates with the DCNR "10-minute walk" initiative. The surrounding, lighter shade of green shows a one-mile radius, which represents a 20-minute walk or 5-minute bike ride. The purple lines highlight roads that fall within the service area and provide a connection from a park trail entrance to the next intersection or road break.

This representation helps define where connections within the service areas could be made to provide access to and between parks.



36

Towamencin Township: Sidewalk Connectivity Study



37

Chapter 2 - Inventory and Analysis

A Closer Look...

Report

3.4 Proposed Improvements Plans

The proposed improvements plan is divided into three (3) pages with plans drawn at a scale of 1" = 1,000'. These plans illustrate the locations of pedestrian and bicycle improvements in Towamencin. Based upon site analysis, field reconnaissance, and information gathered at committee and public meetings, several guiding principles were established. These are as follows:

- Establish safe connections to the schools.
- Connect to parks, trails, and open space within Towamencin and the surrounding area.
- Establish safe connections across "barriers" such as railroad lines and high-volume roadways.
- Connect to the amenities and services in Towamencin as well as in adjacent municipalities.
- Establish cross-township connections (north/south & east/west) on low-stress or low-traffic volume routes.
- Connect neighborhoods to other destinations in the Township.



Towamencin Township: Sidewalk Connectivity Study



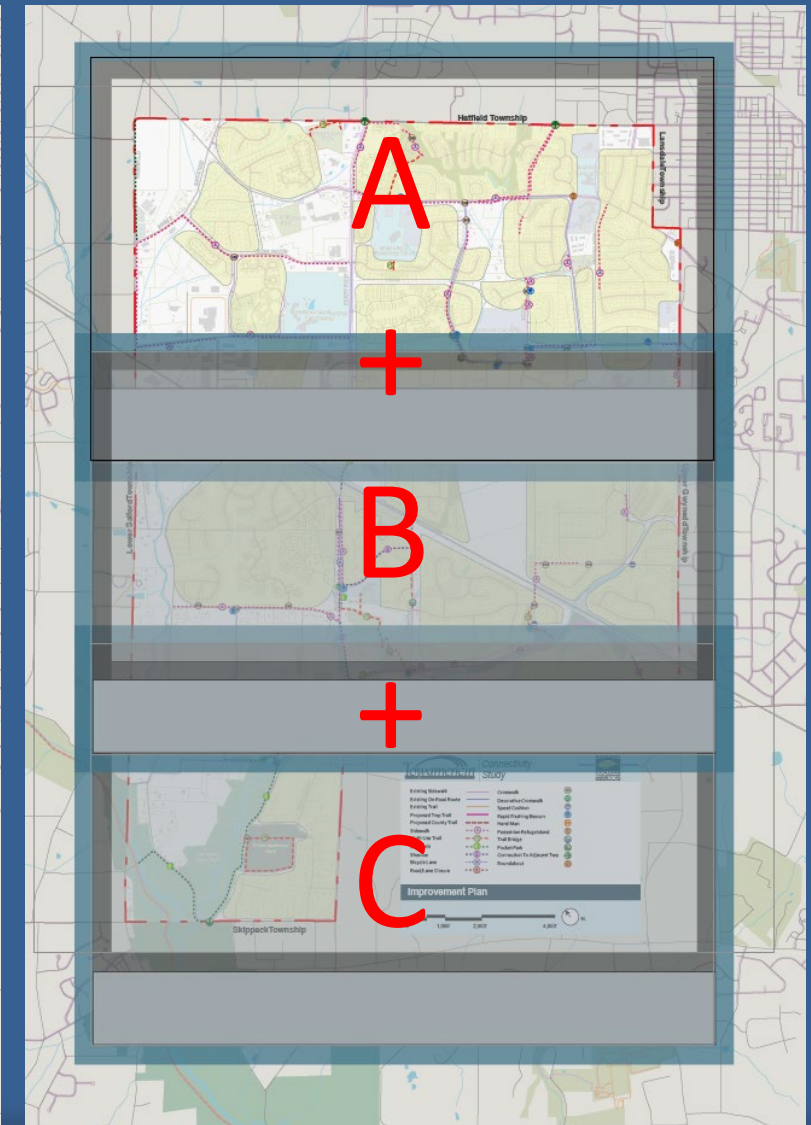
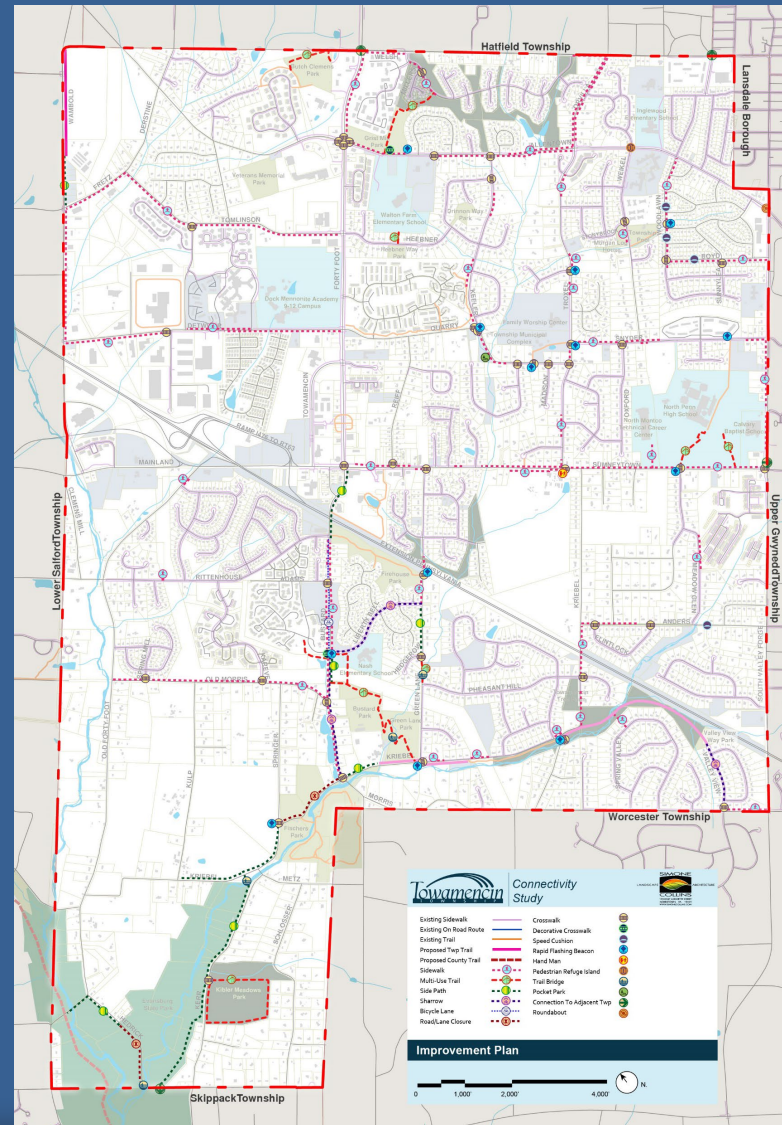


Cost Estimate



Cost Estimate

- Improvement map is separated into three sheets
- Listed A, B, C



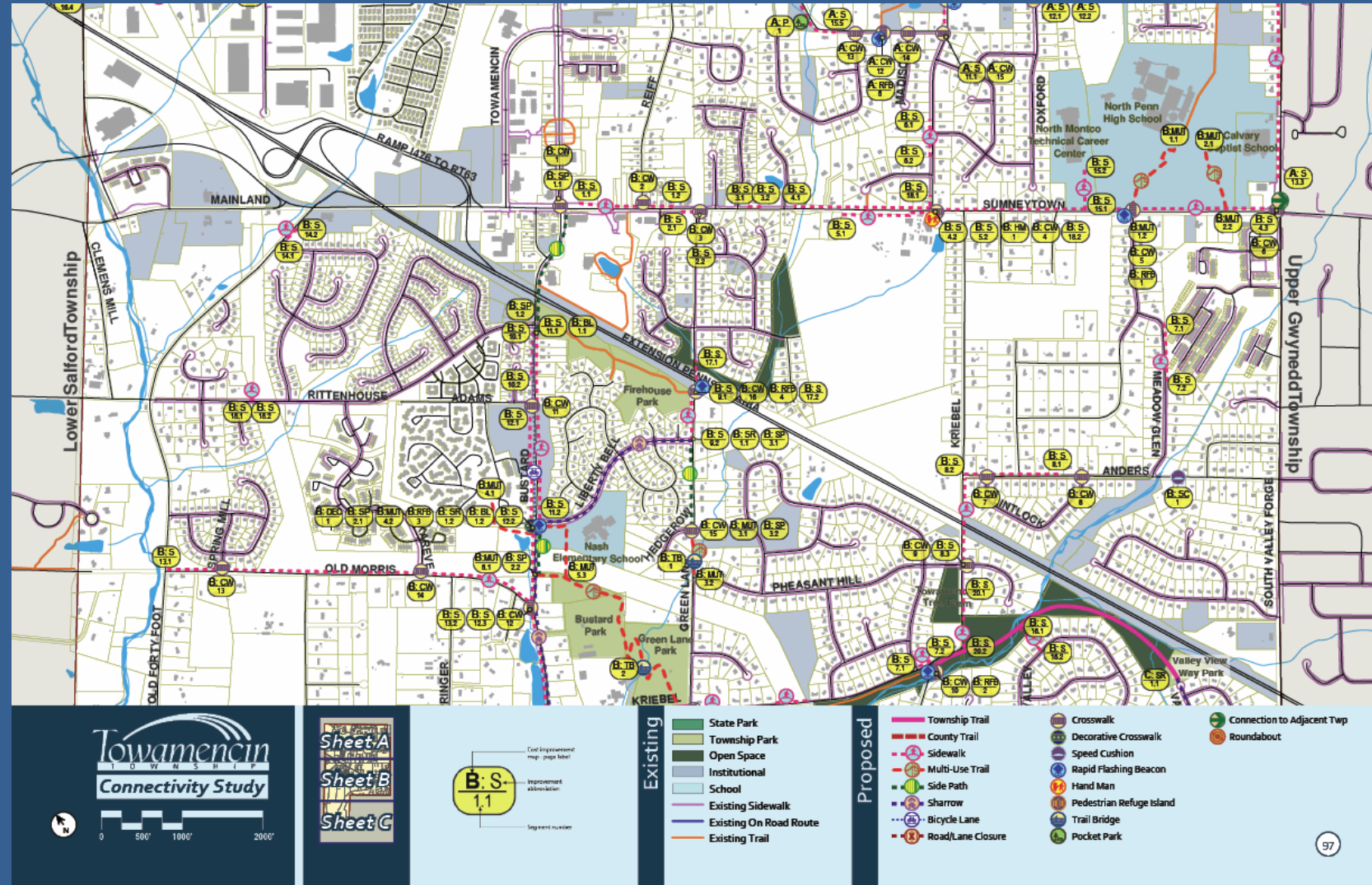
Preliminary Cost Estimate

Sheet A: \$5,960,500



Preliminary Cost Estimate

Sheet B: \$4,140,600



Preliminary Cost Estimate

Towamencin Connectivity Study Cost Summary

Cost Improvement Map - A

Total Proposed Site Improvements	\$ 4,515,263
Mobilization, E&S, Stormwater Allowances	\$ 316,300
Construction Contingency (10%)	\$ 451,600
Design & Engineering (15%)	\$ 677,300
Estimated Costs	5,960,500

Cost Improvement Map - B

Total Proposed Site Improvements	3,136,663
Mobilization, E&S, Stormwater Allowances	\$ 219,700
Construction Contingency (10%)	\$ 313,700
Design & Engineering (15%)	\$ 470,500
Estimated Costs	\$ 4,140,600

Cost Improvement Map - C

Total Proposed Site Improvements	\$ 1,947,900
Mobilization, E&S, Stormwater Allowances	\$ 136,500
Construction Contingency (10%)	\$ 194,800
Design & Engineering (15%)	\$ 292,200
Estimated Costs	\$ 2,571,400

Total Project Cost \$12,672,500



Funding



Funding Resources

Multiple sources possible

- DCNR (off-road)
- DCED – Greenways, Trails & Recreation Program
- **DCED – Multimodal (MTF) due July 31 - 30% match - \$100k to \$3M**
- PennDOT – Multimodal (MTF)
- **PennDOT – Transportation Alternatives Set Aside Program (TASA)
due July 17 \$1.5M max – no match**
- Redevelopment Assistance Capital Program (RACP)
- Bipartisan Infrastructure Law (BIL)
 - Safe streets and roads for all (SS4A)
 - Reconnecting Communities Pilot (RCP)



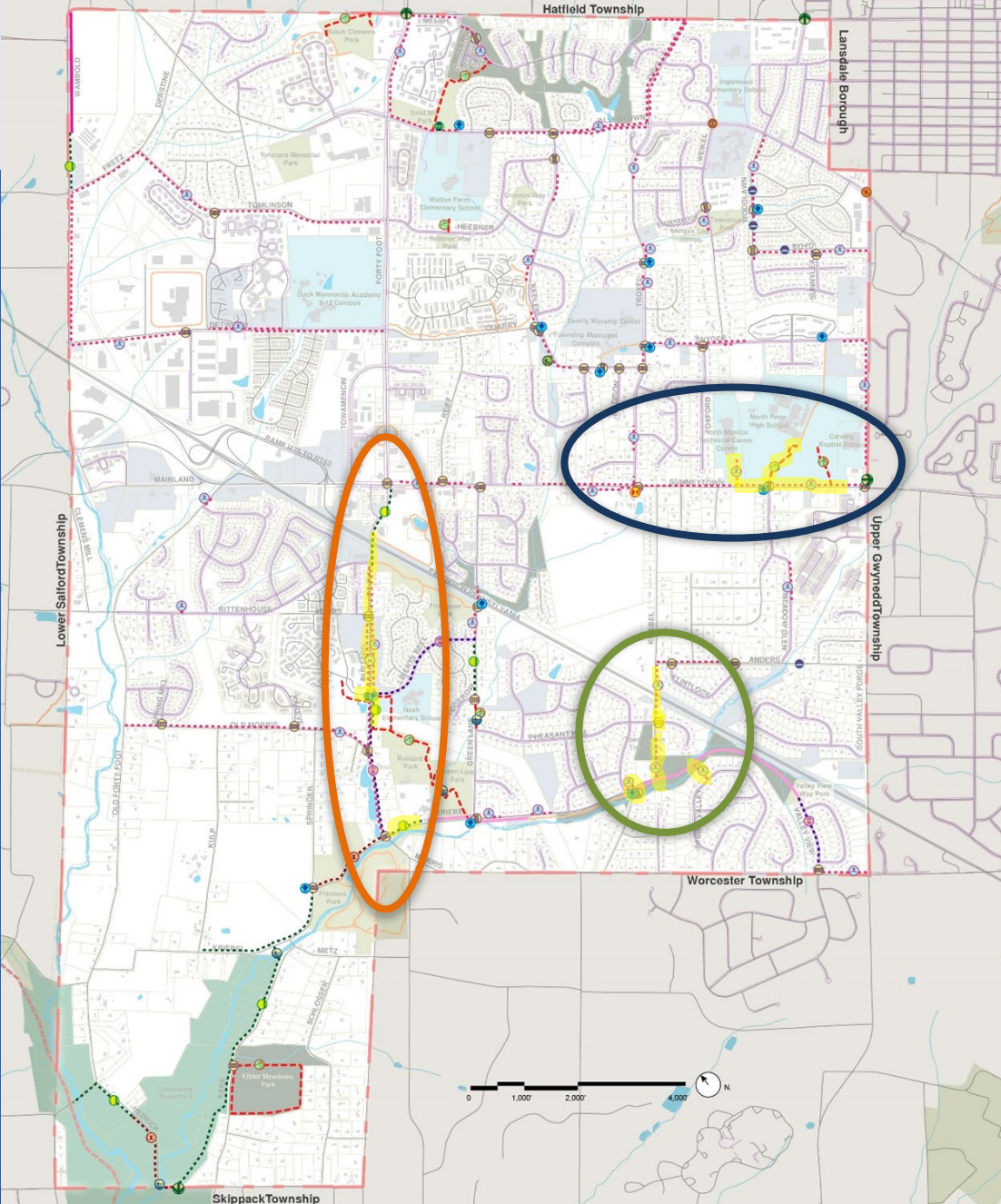
TASA Grant Application Example



TASA Grant Application Example

- 1. Bustard Road Improvements
- 2. Kriebel Road Trail Connection Improvements
- 3. North Penn High School Connection Improvements

Grant Improvements Total = \$1.5 million



#1 Bustard Road Corridor

- **Bike lanes, sidepaths, and sidewalks** on Bustard
- Create connectivity from Sumneytown Pike to Bustard Park
- Connects Bustard Park and Firehouse Park, Nash Elementary, and several residential neighborhoods on both sides of Bustard Road.
- **Side path** between the sewer authority and Bustard Road,
- **New pedestrian crossing** at Bustard and Kriebel Road.

Total = \$236,800



Firehouse Park

Connectivity Improvements

Nash Elementary School

Bustard Park

Kriebel Road Trail & Crossing

Green Lane Park

Fischer's Park

#2 Anders Road to Kriebel Road - Connections to the Kriebel Road Trail

- **Sidewalk** on Kriebel from Anders Road to Pheasant Hill Way
- **Sidewalk** from gap to Kriebel Road Trail
- **Sidewalk** from Spring Valley Road to Kriebel Trail
- **ADA Handicapped ramps, crosswalks, and rapid flashing beacon** between Rampart Lane and the Kriebel Road Trail.

Total = \$448,000



Anders Road

Sidewalk on Kriebel

Pheasant Hill Way

Rampart Lane

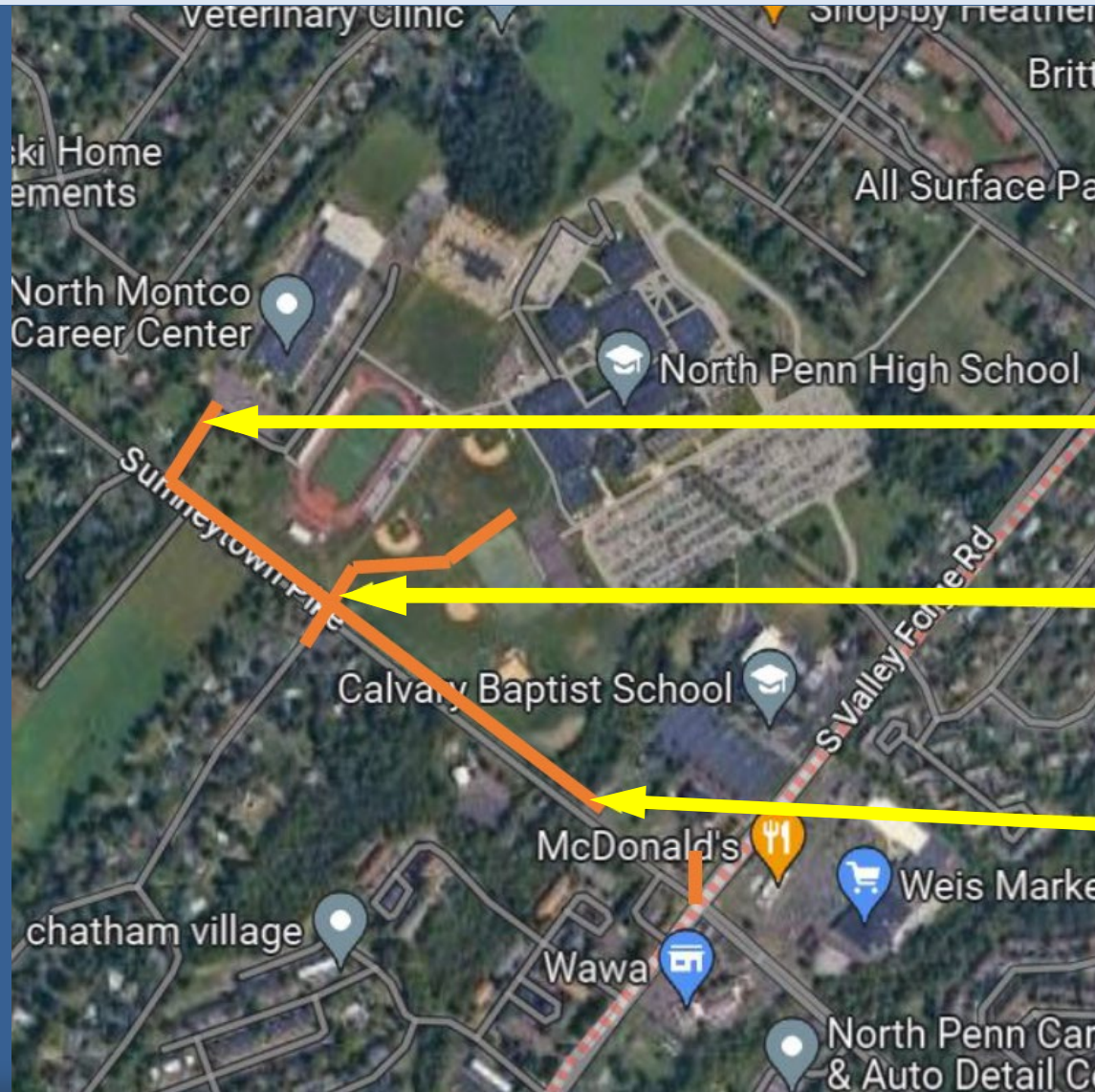
New Crossing Improvmenets

Existing Kriebel Road Trail

Spring Valley Road sidewalk

#3 Sumneytown Pike –North Penn High School Connectivity Improvements

- **Sidewalk** on Sumneytown Pike along the length of North Penn High School.
 - connects to corner of Sumneytown and Valley Forge Road,
- **Sidewalk** into Vocational School
- **Pedestrian crossing** of Sumneytown Pike
 - **Rapid flashing beacon and curb ramps at Bridle Path Drive**
 - **New Pathway /Trail from Bridle Path Drive crossing into campus.**
- **Total = \$613,600**



Sidewalk to Vocational School
Crossing at Bridle Path and Trail to Campus
Sidewalk along Sumneytown Pike

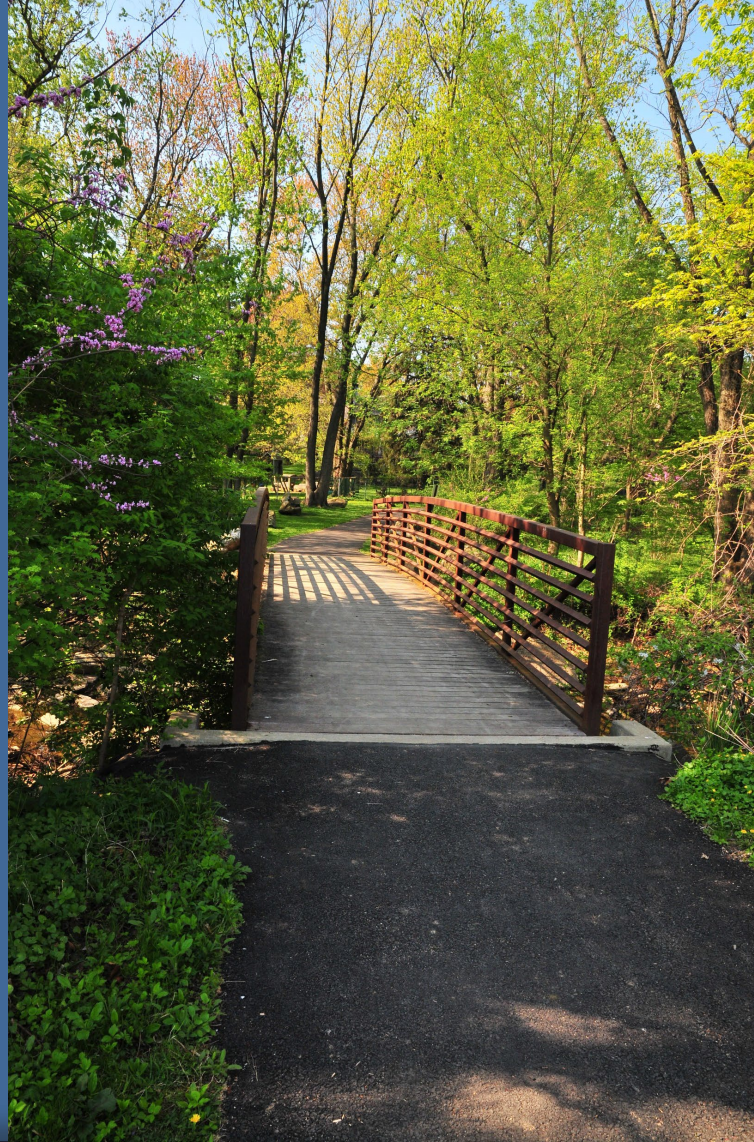


Next Steps



Next Steps

- BOS mtg June 28th
 - Consider TASA grant application
- Consider adoption of Connectivity Study
 - Integrate into new Comprehensive Plan
 - Later - Official Map?
 - Other trail /sidewalk projects - continue to seek grant funding



Project Consultants

Peter Simone

psimone@simonecollins.com

Emma Haley

ehaley@simonecollins.com

Bryce Brucker

bbrucker@simonecollins.com

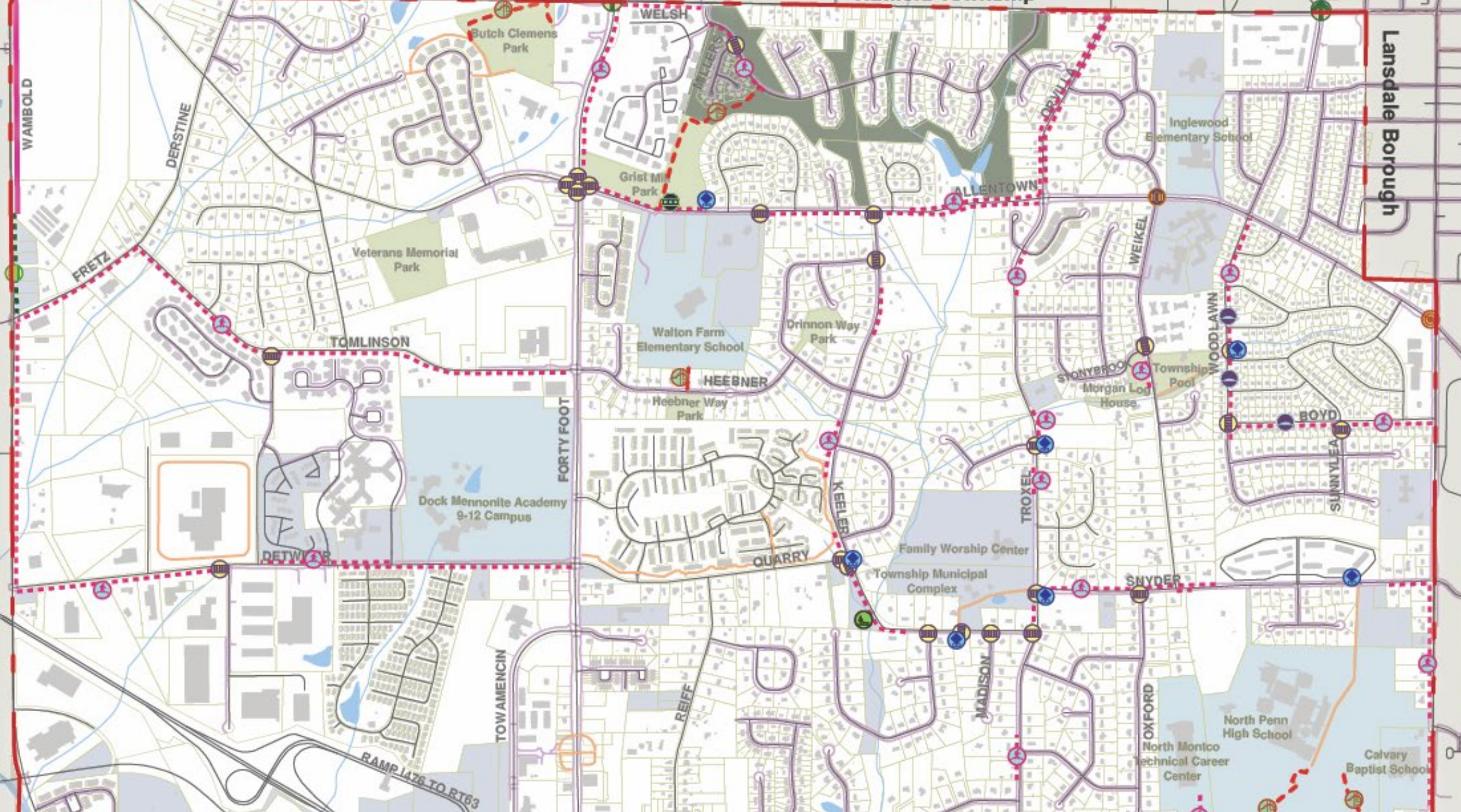
Geoff Creary

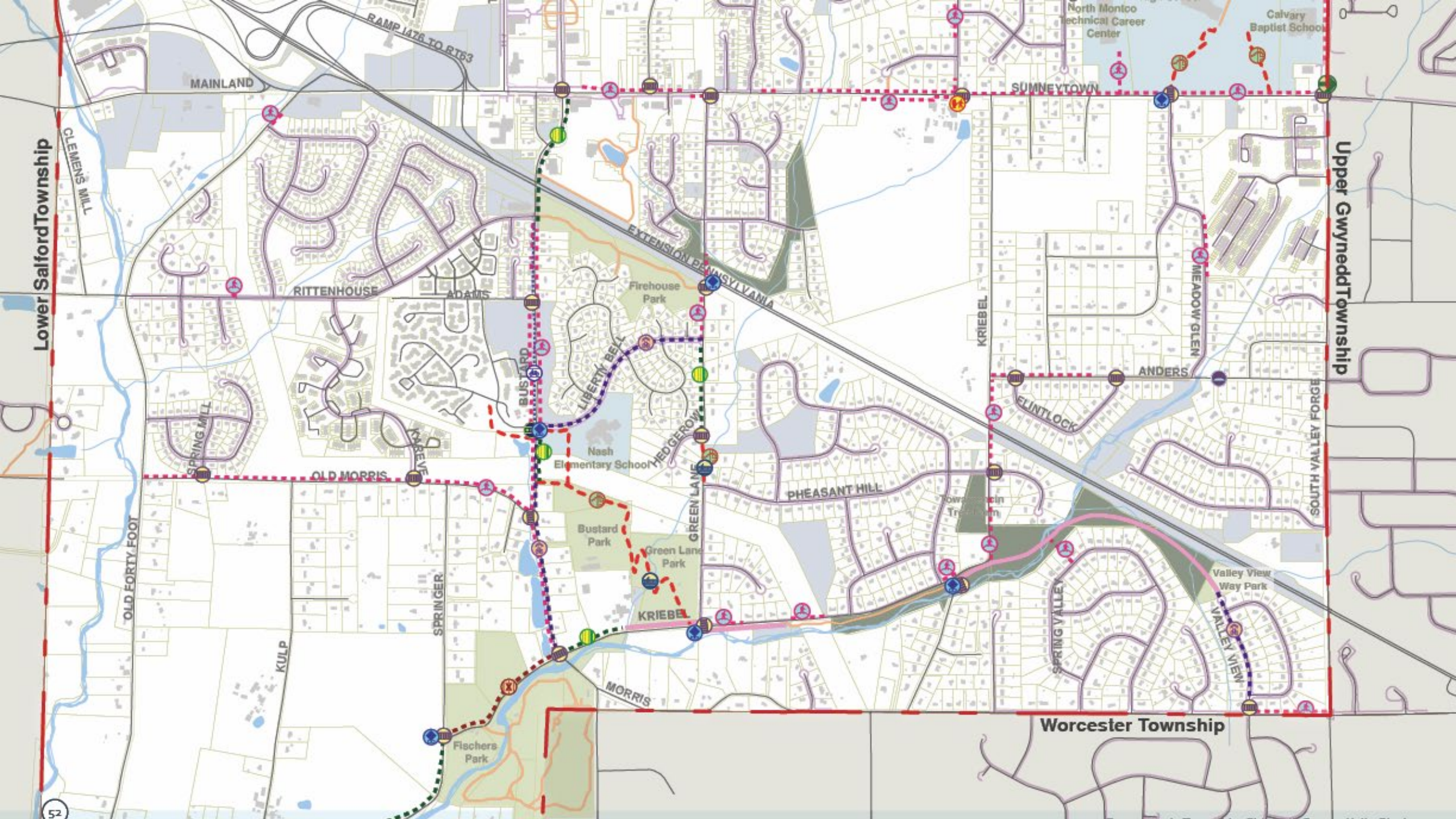
gcreary@simonecollins.com



119 E. Lafayette Street
Norristown, PA 19401
Phone - 610 239 7601
Fax - 610 239 7606
www.simonecollins.com

Hatfield Township





Lower Salford Township

Upper Gwynedd Township

Worcester Township

MAINLAND

SUMNEYTOWN

RITTENHOUSE

ADAMS

EXTENSION PENNSYLVANIA

LIBERTY BELL

BUSTARD

HEDGEROW

GREEN LANE

PHEASANT HILL

FLINTLOCK

ANDERS

MEADOW GLEN

OLD MORRIS

SPRING MILL

SPRINGER

KULP

MORRIS

KRIEBEL

KRIEBEL

SOUTH VALLEY FORGE

SPRING VALLEY

VALLEY VIEW

RAMP 1476 TO RT63

North Montco Technical Career Center

Calvary Baptist School

Firehouse Park

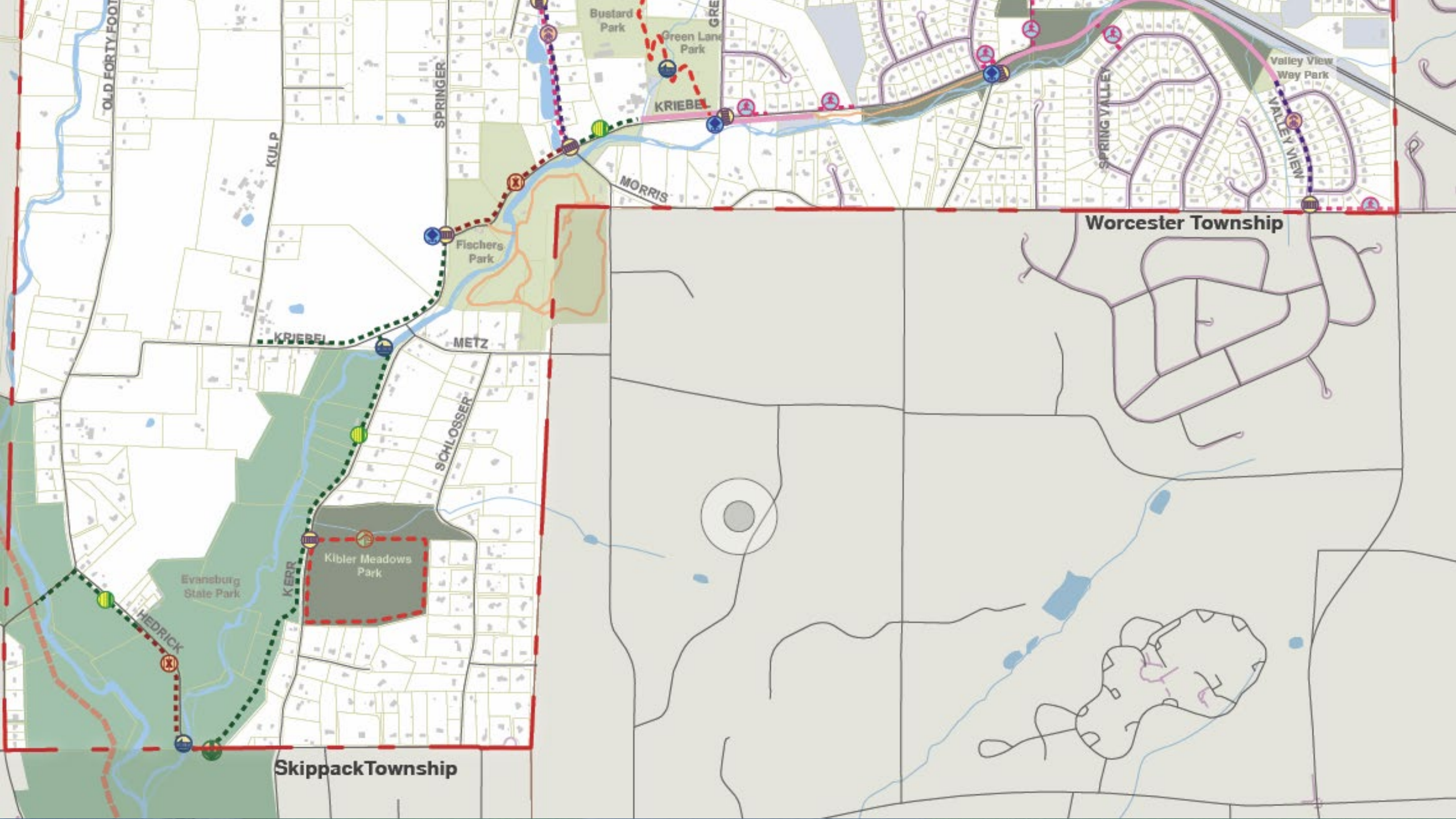
Nash Elementary School

Bustard Park

Green Lane Park

Fischers Park

Valley View Way Park



OLD FORTY FOOT

KULP

SPRINGER

MORRIS

KRIEBEL

KRIEBEL

METZ

SCHLOSSER

KEADY

HEDRICK

Worcester Township

Skippack Township

Bustard Park

Green Lane Park

Fischers Park

Kibler Meadows Park

Evansburg State Park

Valley View Way Park

SPRING VALLEY

VALLEY VIEW

NO
PARKING
BETWEEN
SIGNS